



METRO® TC90 SERIES INSULATED TRANSPORT CABINET (TC90S/TC90B)



TABLE OF CONTENTS

Safety Information & Symbols	2
Identifying your Cabinet.....	2
Part Numbering.....	2
Installation and setup.....	3
Features — all models.....	3
Operating Instructions	4
Cleaning instructions	5
Care and Maintenance	5
Service and Replacement Parts.....	6
Wiring Schematics	10
Warranty	11

Metro Heated Cabinets are for
Hot Food Holding applications only.

DESCRIPTION

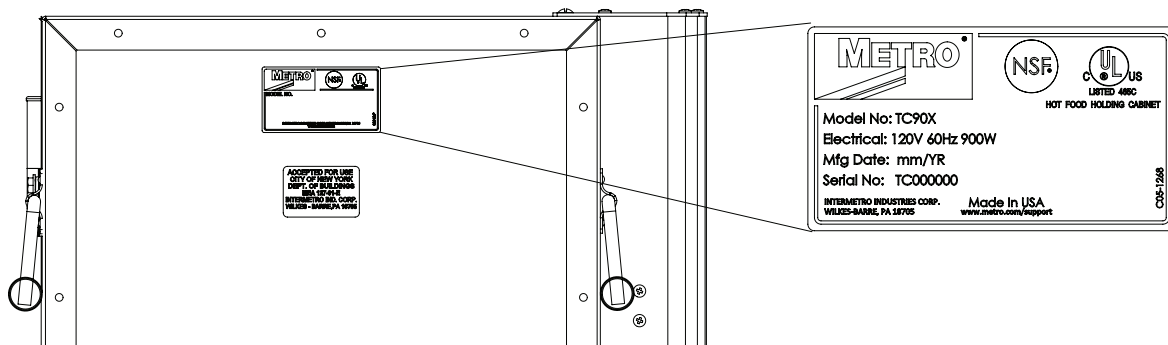
This manual covers cabinets with electrical ratings of: 120V, 60 Hz, 900W

SAFETY INFORMATION

- WARNING:** Follow all food safety guidelines. Pre-heat the cabinet to the desired temperature before placing hot cooked food into the cabinet. Food must be at the appropriate temperature before being placed into cabinet. Use a food probe to check internal food temperature - the cabinet temperature is not necessarily the internal food temperature.
- WARNING:** Only factory-approved service agents should attempt to service, repair or replace electrical components, wiring or power cord.
- WARNING:** This cabinet is for hot food holding applications only.
- WARNING:** Unplug the cabinet before cleaning or servicing. Do not wash the cabinet with a water jet or high pressure water, do not hose wash/spray interior.
- WARNING:** Allow the unit to cool before cleaning, as the interior of the cabinet may be hot enough to burn.
- WARNING:** Food Service Equipment must be electrically grounded. Failure to ground Food Service Equipment may result in serious injury or death from electrical malfunction.
- CAUTION:** Never steam clean. Severe damage or electrical hazard could result.
- CAUTION:** Water dripping onto the floor from open doors can be a slip hazard.



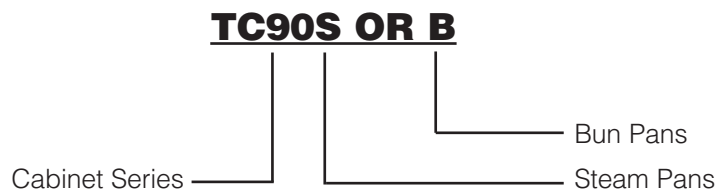
IDENTIFYING YOUR CABINET



For future reference, note the serial and model number found on the data plate of the cabinet here:

Serial number _____

PART NUMBERING



INSTALLATION AND SETUP

1. Check the packaging and cabinet for shipping damage after unloading the unit, and after removing all the packaging.
2. The receiver of this product is responsible for filing freight damage claims. This equipment must be opened immediately for inspection. All visible damage must be reported to the freight company within 48 hours and must be noted on freight bill at the time of delivery.
3. Concealed damage is your responsibility — you must advise the carrier of any loss or damage within 15 days after receipt of the cabinet. If there is damage, retain the original packaging for inspectors.
4. Any protective covers (plastic or paper sheet) must also be removed before turning the cabinet on.

FEATURES — ALL MODELS

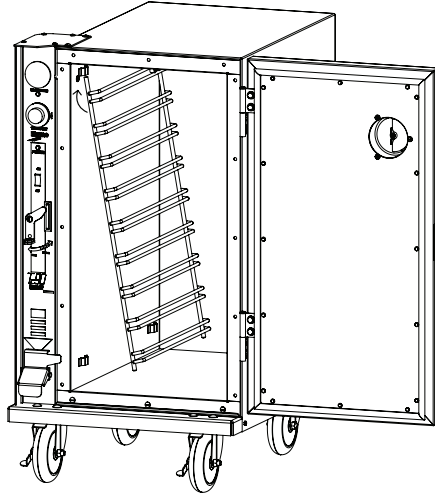
In order to utilize your new cabinet to its full potential; take a minute to identify the following features that have been provided for your convenience.

- Cabinet is shipped in one carton.
- Temperature range is 120°F to 180°F.
- Analog type thermometer to allow temperature monitoring when unit is disconnected from power source.
- 15 amp service.
- 3 - 300 watt heating elements.
- Totally insulated with high temp rigid board fiberglass insulation.
- Kick latch for “hands-off” opening.
- Magnetic door latch.
- Adjustable hinges and strike.
- Removable slide racks.
- Stainless steel internal liner.
- Closed loop thermal break to reduce heat transfer.
- Outside shell brushed aluminum.
- Non-marking 5" neoprene casters (two with brakes).
- Side mounted lift handles.
- Adjustable door mounted vent.

OPERATING INSTRUCTIONS

A. SLIDE RACKS

The slide racks provided with your cabinet are nickel chrome-plated to insure years of corrosion-free service. The racks are already in place when the cabinet is shipped to you. They can be removed for cleaning by first lifting up on the rack and then swinging the bottom towards the center of the cabinet.



The slide spacing is 25/8" to accommodate lip loaded pans for TC90S; bottom loaded pans for TC90B.

The following pans may be used:

9 pans — 12" x 20" x 21/4" (TC90S)

9 pans — 12" x 20" x 25/8" (TC90S)

9 pans — 18" x 26" x 1" (TC90B)

B. CABINET START-UP

1. A nine-foot, three-wire grounded lead cord is supplied fixed to the cabinet. The cord cannot be separated from the cabinet.

NOTE: Before operating your cabinet be sure to unwrap the lead cord completely from bracket.

CAUTION: With the POWER switch OFF, plug the lead cord into a standard grounded 15-amp, 125-VAC receptacle.

2. Set the thermostat dial to setting 10 = HIGH.
3. Snap the POWER switch to ON. The red POWER light will now glow as will the yellow indicator light indicating that power is on and that the heating elements are activated and heating up.
4. Allow the cabinet to PREHEAT FOR APPROXIMATELY 45 MINUTES. After that time, the thermostat can be lowered to a setting of 6 or 7. In a room of average temperature (72°F), this should provide 150°F to 170°F. Adjustments to the temperature may be made as necessary.

NOTE: The POWER (red) light will glow as soon as the POWER switch is switched ON and will continue to glow until switched OFF. The yellow indicator light will go on and off as the thermostat cycles. If the yellow light is not illuminated, this indicates that the cabinet has achieved the preset TEMPERATURE level, NOT that the unit has been switched OFF.

It is not necessary at the end of the operating day to disrupt the temperature setting in order to turn the unit OFF. By switching the POWER switch to OFF, the unit is no longer operating.

By switching the POWER switch to ON when resuming operations, the cabinet will attain the preset level.

CLEANING INSTRUCTIONS

NOTICE

Before proceeding with any **CLEANING** activity strictly follow “Safety Information” on page 2 of this manual.

ALL MODELS

Your TC90 series cabinet has been listed by the National Sanitation Foundation (NSF) which means that it has been designed and constructed in a way that promotes a sanitary condition, i.e. sanitary materials and easy cleanability. To maintain a sanitary condition and obtain the best cabinet performance, Metro strongly suggests that the cabinet be thoroughly cleaned on an adequate regular basis — daily if necessary.

A. REMOVAL OF INTERIOR COMPONENTS FOR CLEANING

All interior components are removable, without tools, for thorough, unobstructed cleaning.

1. Turn off master switch and disconnect the unit from its power source.
2. If necessary, the door may be removed by simply lifting it from its cabinet-mounted hinges. Do not place the door against an object that may scratch the door or damage the gasket.
3. The slide racks may be removed by lifting them from their respective brackets.
4. After cleaning, simply reverse the above steps to reassemble the cabinet.

B. SPECIFIC CLEANING INSTRUCTIONS

Do not immerse the cabinet when cleaning. Instead, use a damp cloth and a drying towel. **BE SURE TO THOROUGHLY DRY THE UNIT BEFORE RETURNING IT TO USE.**

C. GENERAL CLEANING INSTRUCTIONS

1. **LIGHT SOIL:** If routine (daily) cleaning is practiced, a mild soap and warm water should be sufficient to keep the unit clean.
2. **HEAVIER SOIL:** If cleaning has been postponed, solvent or emulsion type cleaners that can be applied with bare hands will give excellent results. Such cleaners are available under various brand names and detergent suppliers can recommend materials appropriate for use on natural and epoxycoated aluminum and stainless steel interior liner.

NOTE: For every cleaning method, best results are always obtained when the cleaner and technique are matched to the soil conditions involved. To ensure using the proper cleaner for natural and epoxy-coated aluminum and stainless steel, contact your detergent representative.

CARE AND MAINTENANCE

NOTICE

Before proceeding with any **CLEANING** activity strictly follow “Safety Information” on page 2 of this manual.

A. CABINET MAINTENANCE—ALL MODELS

Your TC90 series cabinet has been designed to require very little maintenance. With normal use, cleaning is the only form of maintenance that need be done on a regular basis. Keeping the casters free of dirt build-up will go a long way in prolonging their life.

If your cabinet is rolled over rough surfaces or transported over-the-road, the various threaded fasteners, i.e., screws and nuts, should be periodically inspected and tightened if necessary, particularly the transport latch, hinge and caster fasteners.

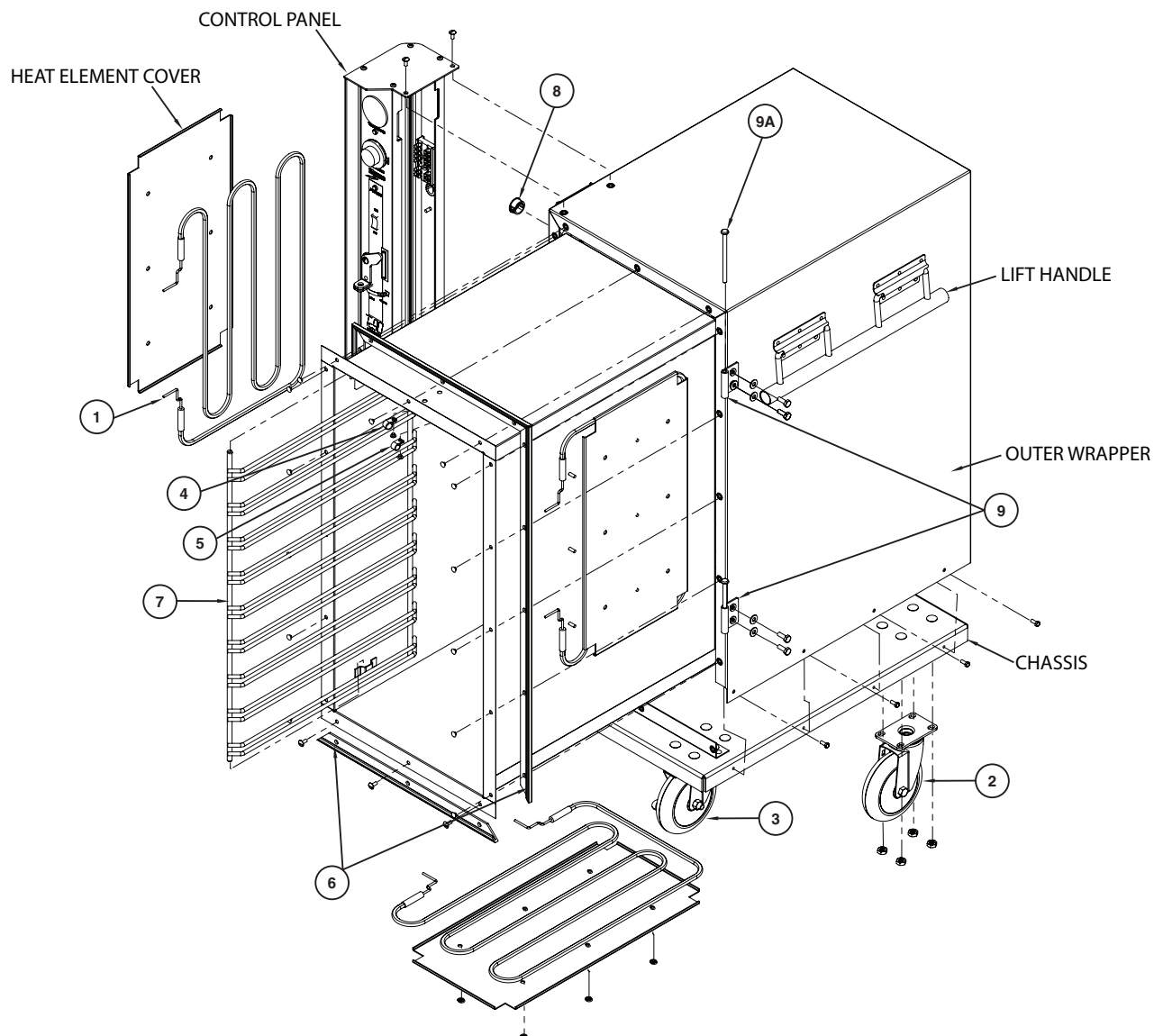
B. CONTROL PANEL MAINTENANCE

The control panel of your cabinet has also been designed to require very little maintenance. With normal use, cleaning is the only form of maintenance that need be done on a regular basis. No maintenance is required on the electrical components.

REPLACEMENT PARTS AND PROCEDURES

A. CABINET

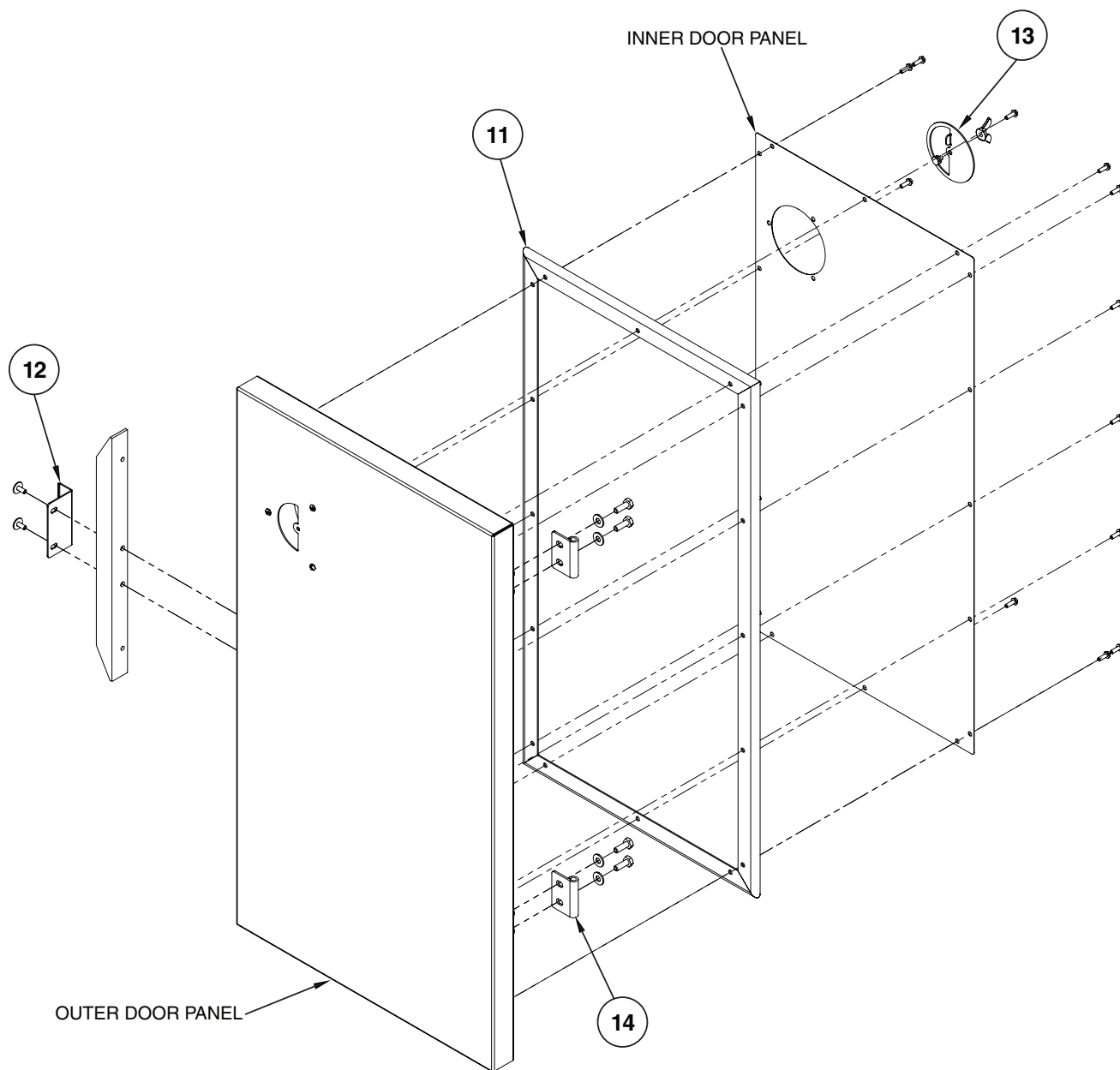
1. Refer to TC90S/TC90B Series Cabinet Replacement Parts Diagram to identify the part(s) to be replaced.



CABINET REPLACEMENT PARTS LIST

Item No.	Part No.	Description
1	RPC13-112	Heating Element
2	B5DN	Caster — Without Brake
3	B5DNB	Caster — With Brake
4	RPC06-222	Thermometer Bulb Clamp
5	RPC06-221	Thermostat Bulb Clamp
6	RPC06-323	Vertical Thermal Break
	RPC06-324	Hoz. Thermal Break TC90S
	RPC06-324A	Hoz. Thermal Break TC90B
7	RPTC90S-RACK	Slide Rack TC90S
	RPTC90B-RACK	Slide Rack TC90B
8	RPC06-189	Star Bushing
9	RPC13-112	Cabinet Hinge
9A	RPF07-050A	Door Hinge Pin

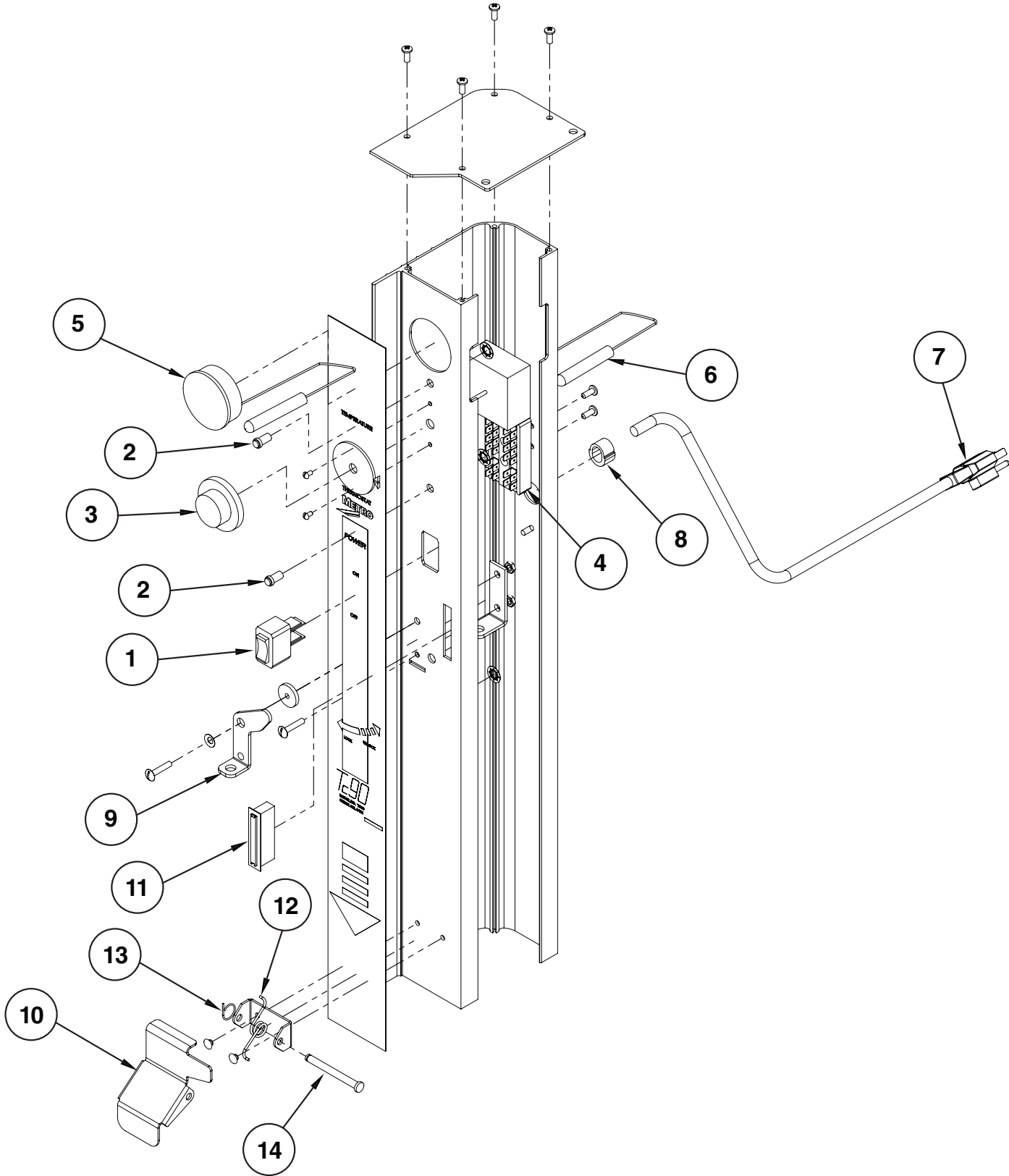
TC90S/TC90B Series Cabinet Replacement Parts Diagram



REPLACEMENT PARTS LIST

Item No.	Part No.	Description
10	RPCT90S-300G	Complete Door Assembly (TC90S)
	RPCT90B-300G	Complete Door Assembly (TC90B)
11	RPC06-325	Door Gasket (TC90S)
	RPC06-325A	Door Gasket (TC90B)
12	RPTC90S-3400	Strike Plate
13	RPC11-206	Door Vent Assembly
14	RPHINGE-4001	Door Hinge

TC90S/TC90B Control Panel Replacement Parts Diagram



REPLACEMENT PARTS LIST

Item No.	Part No.	Description
1	RPC13-375	Power Switch
2	RPC13-246	Indicator Lights (Red)
	RPC13-245	Indicator Lights (Yellow)
3	RPC06-313	Thermostat Knob
4	RPC13-096	Terminal Block
5	RPC13-109	Thermometer
6	RPC13-113	Thermostat
7	RPC13-108	Power Cord
8	RPC13-110	Strain Relief
9	RPC09-028	Transport Latch
10	RPC09-027	Kick Latch
11	RPC14-041	Magnetic Door Latch
12	RPC10-013	Kick Latch Spring
13	RPF07-040	Cotter Pin
14	RPF05-017	Clevis Pin



Warranty

WARRANTY, EXCLUSION OF WARRANTIES AND LIMITATION OF LIABILITY.

InterMetro Industries Corporation (hereinafter referred to as "Seller") warrants to the original purchaser that all products in its catalog, or custom products, delivered hereunder will be free from defects in workmanship and material. THE FOREGOING WARRANTY IS EXCLUSIVE AND IN LIEU OF ALL OTHER WARRANTIES, EXPRESS, IMPLIED OR STATUTORY, INCLUDING ANY WARRANTY OF MERCHANTABILITY OR FITNESS FOR A PARTICULAR PURPOSE. This Warranty shall be for a period of one (1) year from the date of shipment from Seller's warehouse or factory. If any product delivered hereunder does not meet the Warranty specified above, providing the product has not been altered in any way by anyone other than Seller's factory-authorized representative, and assuming normal and proper use and maintenance, Seller will, at its option, repair or replace any part or material it determines, upon inspection, to be defective; provided however, that a charge for labor will be made except during a period of one (1) year from the date of original shipment from Seller's warehouse or factory. No product, or part thereof, is to be returned to Seller without prior written approval from Seller's factory. All exchanges and replacement shipments will be F.O.B. Seller's factory. Warranties for equipment or articles not manufactured by the Seller are solely the warranties of the manufacturers thereof and they are hereby assigned to the purchaser without recourse to the Seller.

SELLER'S LIABILITY FOR ANY CLAIM OF ANY KIND, WHETHER BASED ON CONTRACT, NEGLIGENCE OR STRICT LIABILITY IN TORT, AND BY WHOMEVER MADE, FOR ANY DIRECT, INDIRECT, INCIDENTAL OR CONSEQUENTIAL LOSS, DAMAGE OR INJURY, RESULTING TO THE PURCHASER OR ANY THIRD PARTIES, arising out of, connected with or resulting from this Agreement, or from the performance or breach thereof, or from the manufacture, sale, delivery, resale, installation, inspection, repair or use of any product covered by or furnished under this Agreement, WHETHER OR NOT CAUSED BY SELLER'S NEGLIGENCE, SHALL IN ALL EVENTS BE EXCLUSIVELY LIMITED TO THE COST OF CORRECTING DEFECTIVE, DAMAGED OR NON-CONFORMING PARTS OR MATERIAL AS HEREIN PROVIDED, and upon the expiration of one (1) year, all such liability shall terminate.

SELLER DOES NOT AUTHORIZE any person to assume for it any obligations or liabilities greater than or different than those set forth in this Warranty. The terms under which any of Seller's products may be resold must be limited in accordance with this Warranty.

THIS AGREEMENT, and all the rights and obligations arising hereunder, shall be construed in accordance with, and be governed by, the law of the Commonwealth of Pennsylvania, U.S.A.

TO INSURE WARRANTY implementation, return the completed registration card within 15 days of cabinets' receipt to: InterMetro Industries Corp., Wilkes-Barre, PA 18705



InterMetro Industries Corporation
Wilkes-Barre, PA 18705

04/2022

For online warranty registration, please go to www.metro.com/service-support/thermal-cabinets to register electronically

* Save this document for future application, load rating and/or safety reference.

© 2022 InterMetro Industries Corporation, Wilkes-Barre, PA 18705
L01-144 REV K 04/22



We put space to work.®

an Ali Group Company



The Spirit of Excellence