



## INSTRUCTIONS FOR USE

# Starsys Electronic PIN Locking with Key Override



### **XD Cart Load Capacities:**

Adjustable qwikSLOT™ Shelves:  
Single Wide = 300 lbs. (136 kg)  
Double Wide = 600 lbs. (272 kg)  
Triple Wide = 600 lbs. (272 kg)

### **XD Shelf Weight Capacities:**

Adjustable qwikSLOT™ Shelves:  
Single Wide = 100 lbs. (45 kg)  
Double Wide = 200 lbs. (91 kg)

### **Shelf Weight Capacities:**

Full Extension Shelves:  
Single Wide = 60 lbs. (27 kg)  
Double Wide = 125 lbs. (57 kg)  
Fixed qwikSLOT™ Shelves:  
Single Wide = 150 lbs. (68 kg)  
Double Wide = 300 lbs. (136 kg)

***For Enclosed Shells  
and Wire Shelves***

### DESCRIPTION

Starsys Electronic PIN Locking with Key Override – This instruction sheet covers installation procedure, user guide for Electronic PIN Lock (CompX Regulator), RP parts, RP kit installation, unlock/lock using key override and Electronic PIN Lock in double and single door.

## CompX<sup>®</sup> Regulator<sup>®</sup> USER GUIDE

The Regulator<sup>®</sup> is used for locking cabinet doors and drawers. It can mount to cabinet doors with a material thickness of 1/32" to 1-7/16". Powered by 2-AAA batteries (included), Regulator<sup>®</sup> operates using a 4 to 8 digit code. Operation is simple: type a valid code and press **ENTER**. Then just turn the lever to the locked or unlocked position.

### Regulator<sup>®</sup> is easy to install, and offers:

- Programmable user and supervisor codes,
- Programmable modes of operation,
- Programmable reset features,
- Regulator<sup>®</sup> is intended for interior use only,
- **Operating Temperature:** 50°F – 120°F (10°C – 48°C).

**NOTE:** It is strongly recommended that batteries be replaced on an annual basis. In the event the batteries should die, they can be replaced via the external battery compartment.

### Contents – Self Lock Version:

- Self Locking Regulator<sup>®</sup> Lock assembly featuring SlamCAM,
- 2 AAA alkaline batteries,
- SlamCAM spacer discs,
- Mounting hardware.

Each lock contains 2 green stickers that are needed for resetting Regulator<sup>®</sup>. In the event Regulator<sup>®</sup> needs to be reset, one green sticker is placed on the back of the device. The remaining green sticker should be saved in a safe and secure location for future reference. (See "**Reset Instructions**" on page #5.)

### Care and Cleaning

To clean the Regulator<sup>®</sup> surface, apply non-acid based cleaner to a clean cotton cloth; do not spray cleaner directly on the Regulator<sup>®</sup>. Wipe down keypad and its respective housing surfaces of excess cleaner.

### Powering Up and Battery Installation

CompX<sup>®</sup> Regulator<sup>®</sup> is shipped with two AAA batteries. While Regulator<sup>®</sup> features a low battery indicator, annual battery replacement is recommended.

**NOTE:** Mixing batteries of different chemistries could damage the Regulator<sup>®</sup> resulting in lock failure.

To power up Regulator<sup>®</sup>, remove the red tag. Lock is now ready for use. A T-15 pin in head Torx<sup>®</sup> (6-lobe) (Not Included) will be required to remove the battery cover.

### To change batteries:

1. Loosen the retaining screw.
2. Remove battery cover.
3. Press **CLEAR** "5" times.
4. Insert new batteries as shown in the illustration.
5. Reinstall battery cover, tighten retaining screw.

### Programming – Introduction

CompX<sup>®</sup> Regulator<sup>®</sup> is easy to program and operate.

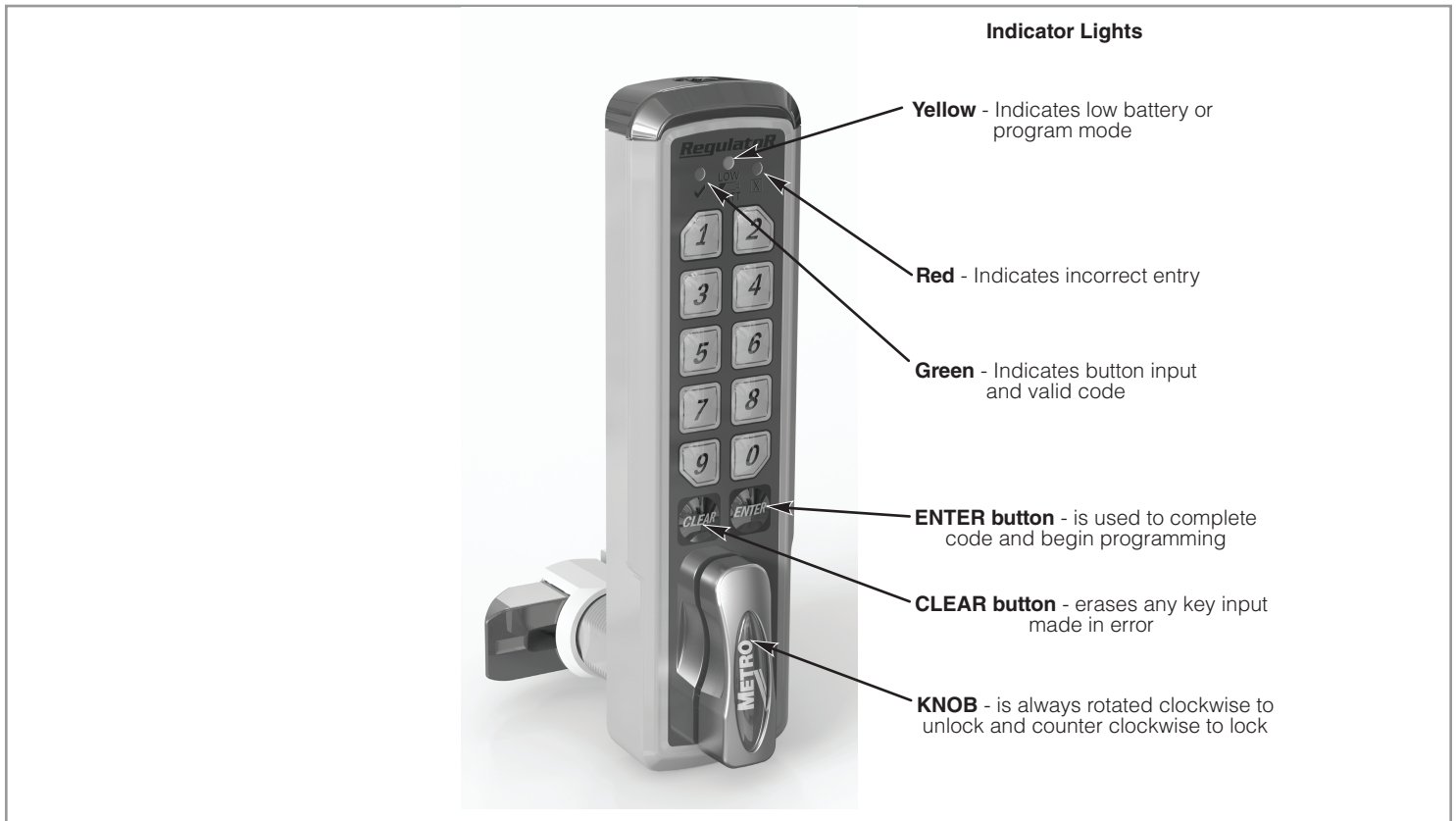
Type the user code (factory default 1234) and press **ENTER** to lock or unlock the cabinet.

The supervisor can change operating codes, modes and restore lock settings.

While Regulator<sup>®</sup> is easy to program, we highly recommend reading the complete programming instructions prior to making any changes. Remember to keep track of any programming changes.

Button locations, indicator lights and knob referenced in the programming instructions are shown below:





**Follow the directions below to operate (unlock and lock) the standard Self Lock version of RegulatorR:**

- type a valid code, press ENTER,
- rotate knob clockwise 90°,
- hold knob until door is open,
- release knob, RegulatorR knob will return to the locked position. Door can be closed at any time.

**RegulatorR Programming Mode**

To enter programming mode you must know the supervisor code. The default supervisor code is 12345. Once in programming mode, multiple changes can be made prior to exiting programming.

**NOTE:** There is a 10 second programming time limit between each step. If RegulatorR times out or an error is made, programming will end and you will need to enter programming mode again.

1. Lock must be in the locked position prior to entering programming mode.
2. Type supervisor code and press ENTER.
3. Rotate the knob to the **unlocked** position and press and hold ENTER for "3 seconds" (yellow indicator light will illuminate).
  - If product is Self Lock with the SlamCAM feature you can now let go of the knob.
4. With the yellow indicator light illuminated, programming can begin.

**Changing the User Code**

To change the user code, refer "**RegulatorR Programming Mode**" to enter programming mode. The factory default user code is 1234 (User codes must be 4 to 8 digits in length.)

**NOTE:** There is a 10 second programming time limit between each step. If RegulatorR times out or an error is made, programming will end and you will need to enter programming mode again.

1. Place RegulatorR into programming mode (See "**RegulatorR Programming Mode**").
2. Press "1" and then press ENTER.
3. Type the current user code and press ENTER.

4. Type the new user code and press **ENTER**.
5. Retype the new user code and press **ENTER**.
6. If successful, the **green** indicator light will illuminate for 1 second.

Continue programming or **press 9** and then **ENTER** to exit programming.

**NOTE:** Self Lock Regulator operates with a fixed code. **Changing the Supervisor Code**

To change the supervisor code, refer "**Regulator Programming Mode**" to enter programming mode. The factory default supervisor code is **12345** (supervisor codes must be 4 to 8 digits in length.)

**NOTE:** There is a 10 second programming time limit between each step. If Regulator times out or an error is made, programming will end and you will need to enter programming mode again.

1. Place Regulator into programming mode (See "**Regulator Programming Mode**").
2. Press "**2**" and then press **ENTER**.
3. Type the current supervisor code and press **ENTER**.
4. Type the new supervisor code and press **ENTER**.
5. Retype the new supervisor code and press **ENTER**.
6. If successful, the **green** indicator light will illuminate for 1 second.

Continue programming or **press 9** and then **ENTER** to exit programming.

### Reset Instructions

Regulator<sup>®</sup> features a reset code which will restore the default supervisor code and user code. Regulator was shipped with reset stickers; one attached to the back of the Regulator and an extra sticker that should be saved in a safe and secure location for future reference.

**NOTE:** To restore the factory default supervisor and user code, type the "**Reset Code**" assigned to the Regulator and press **ENTER**.

### Programming Security Timeout ON / Security Timeout OFF

**WARNING:** Security Timeout ON will disable the Regulator from use for 5 minutes when 5 invalid attempts to unlock Regulator occur. During this time, Regulator will not unlock with either the valid user or supervisor code.

To change the Regulator to Security Timeout ON or OFF, refer "**Regulator Programming Mode**" to enter programming mode.

**NOTE:** There is a 10 second programming time limit between each step. If Regulator times out or an error is made, programming will end and you will need to enter programming mode again.

1. Place Regulator into programming mode (See "**Regulator Programming Mode**").
  - To turn **Security Timeout ON**, type "**11**" and then press **ENTER**.

OR

- To turn **Security Timeout OFF**, type "**10**" and then press **ENTER**.
2. If successful, the **green** indicator light will illuminate for 1 second.

Continue programming or **press 9** and then **ENTER** to exit programming.

### Reset User Code to Factory Default 1234

To reset the **User Code** to the factory default **1234**, refer "**Regulator Programming Mode**" to enter programming mode.

**NOTE:** There is a 10 second programming time limit between each step. If Regulator times out or an error is made, programming will end and you will need to enter programming mode again.

1. Place Regulator into programming mode (See "**Regulator Programming Mode**").
2. Type "**8888**" and then press the **ENTER** button.
3. If successful, the **green** indicator light will illuminate for 1 second.

Continue programming or **press 9** and then **ENTER** to exit programming.

### Add User Without Specifying Memory Slot

The **Supervisor Code** memory location is called **Slot 01** and the first **User Code** is called **Slot 02**.

- Any additional user codes reside in memory slots 03-20.
- To add a user code without specifying a memory slot (03 -20), refer "**Regulator Programming Mode**" to enter programming mode.

User codes must be 4 to 8 digits in length and **must** be different from all existing codes (including Slot 01 Supervisor & Slot 02 User codes).

**NOTE:** There is a 10 second programming time limit between each step. If Regulator times out or an error is made, programming will end and you will need to enter programming mode again.

1. Place Regulator into programming mode (See "**Regulator Programming Mode**").
2. Press "410" and then press ENTER.
3. Type the new user code and press ENTER.
4. Retype the new user code and press ENTER.
5. If successful, the **yellow** indicator light will illuminate.

Continue programming or **press 9** and then ENTER to exit programming.

## Add User to Specific Memory Slot (03 – 20)

The **Supervisor Code** memory location is called **Slot 01** and the first **User Code** is called **Slot 02**.

- Any additional user codes reside in memory slots 03-20.
- To add a user code to a specific memory slot (03 -20), refer "**Regulator Programming Mode**" to enter programming mode.

User codes must be 4 to 8 digits in length and **must** be different from all existing codes (including Slot 01 Supervisor & Slot 02 User codes).

**NOTE:** There is a 10 second programming time limit between each step. If Regulator times out or an error is made, programming will end and you will need to enter programming mode again.

1. Place Regulator into programming mode (See "**Regulator Programming Mode**").
2. Press "411" and then press ENTER.
3. Type memory slot to be added followed by ENTER (for memory slots 03 - 09, you must type leading "0" – e.g. "07" for slot 7).
4. Retype memory slot to be added followed by ENTER.
5. Type the new user code and press ENTER.
6. Retype the new user code and press ENTER.
7. If successful, the **yellow** indicator light will illuminate.

Continue programming or **press 9** and then ENTER to exit programming.

## Delete User Without Specifying Memory Slot

The **Supervisor Code** memory location is called **Slot 01** and the first **User Code** is called **Slot 02**.

- The additional user codes reside in memory slots 03-20.
- To delete a user code without specifying a memory slot (03 -20), refer "**Regulator Programming Mode**" to enter programming mode.

**NOTE:** There is a 10 second programming time limit between each step. If Regulator times out or an error is made, programming will end and you will need to enter programming mode again.

1. Place Regulator into programming mode (See "**Regulator Programming Mode**").
2. Press "400" and then press ENTER.
3. Type the user code to be deleted and press ENTER.
4. Retype the user code to be deleted and press ENTER.
5. If successful, the **yellow** indicator light will illuminate.

Continue programming or **press 9** and then ENTER to exit programming.

## Delete User From Specific Memory Slot (03 – 20)

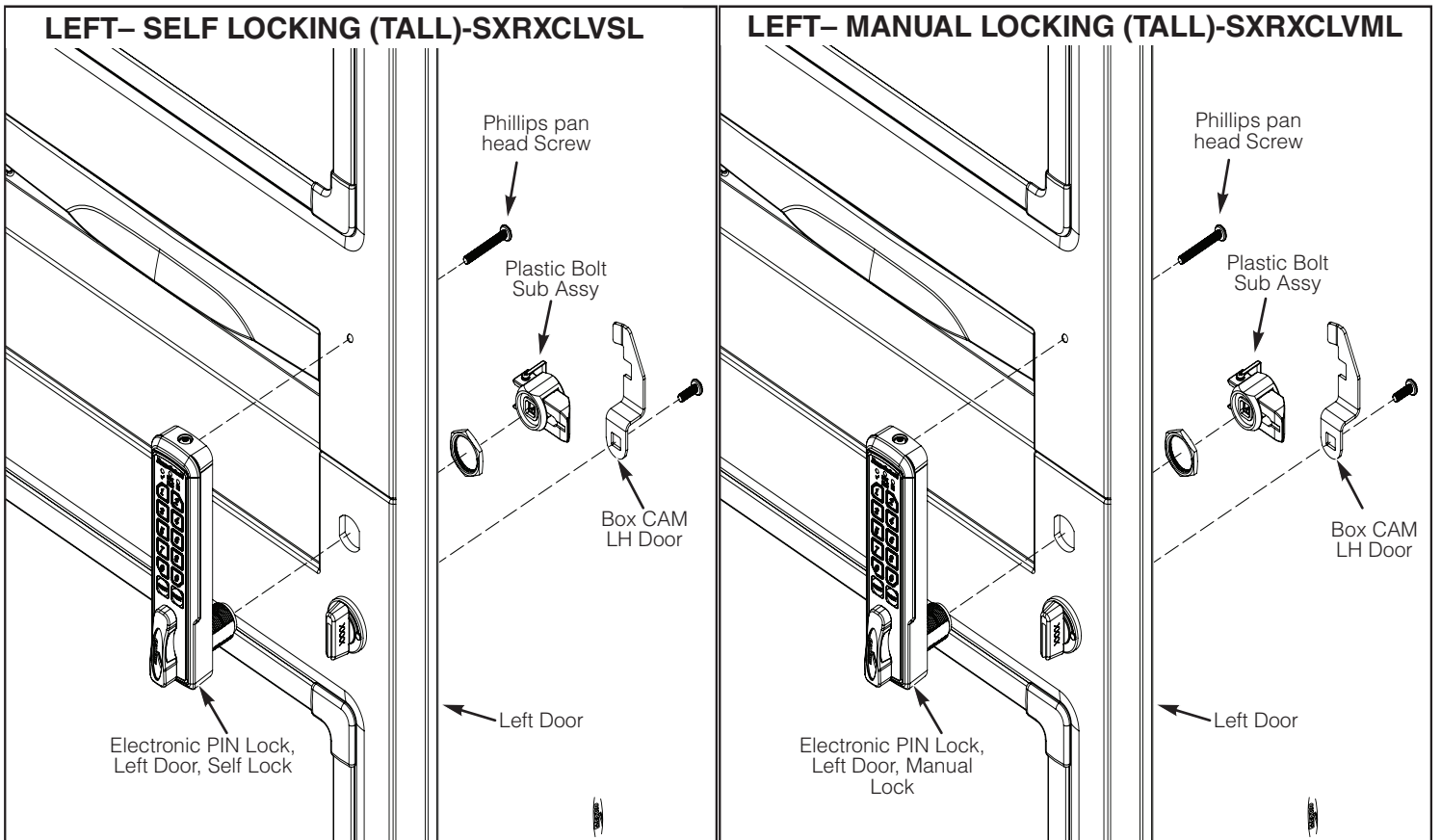
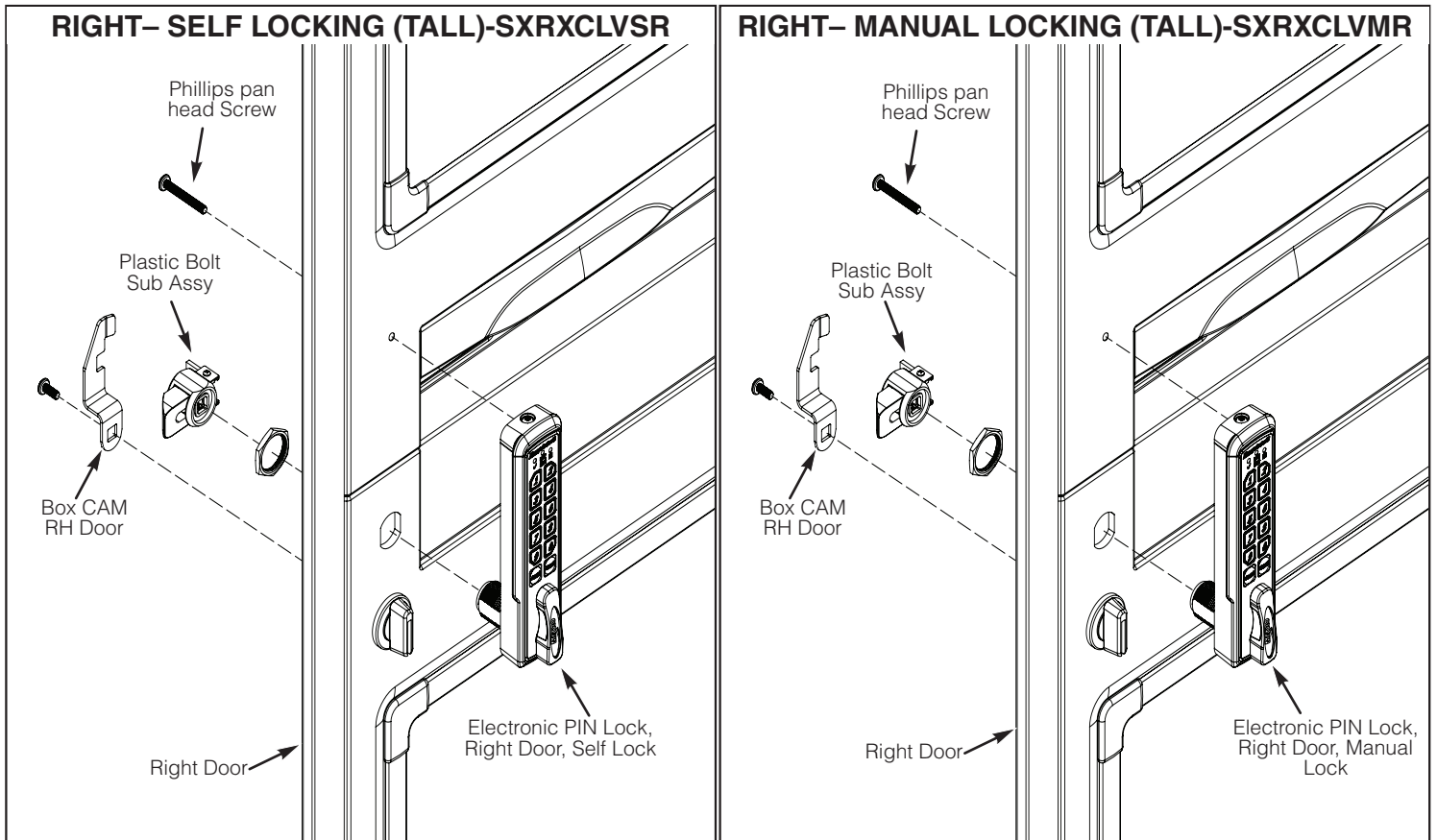
The **Supervisor Code** memory location is called **Slot 01** and the first **User Code** is called **Slot 02**.

- The additional user codes reside in memory slots 03-20.
- To delete a user code from a specific memory slot (03 -20), refer "**Regulator Programming Mode**" to enter programming mode.

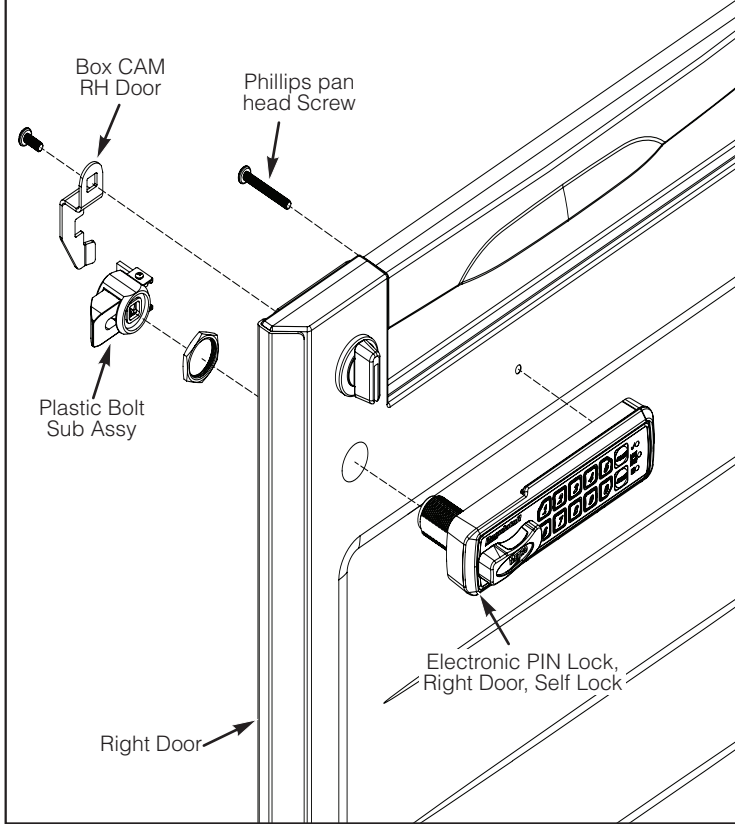
**NOTE:** There is a 10 second programming time limit between each step. If Regulator times out or an error is made, programming will end and you will need to enter programming mode again.

1. Place Regulator into programming mode (See "**Regulator Programming Mode**").
2. Press "401" and then press ENTER.
3. Type memory slot to be vacated followed by ENTER (for memory slots 03 - 09, you must type leading "0" – e.g. "07" for slot 7).
4. Retype memory slot to be vacated followed by ENTER.
5. If successful, the **yellow** indicator light will illuminate.

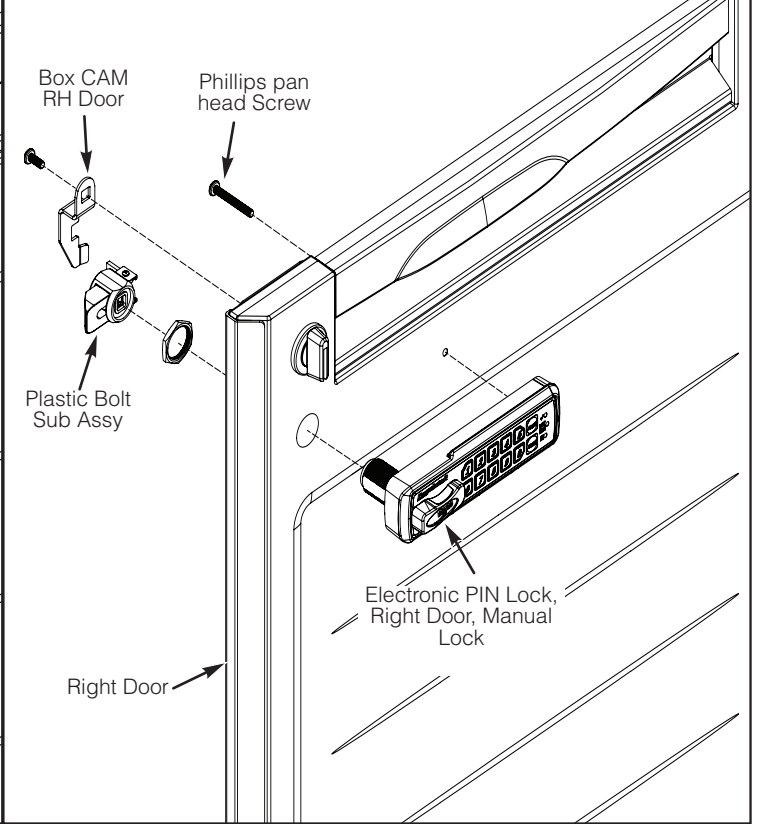
Continue programming or **press 9** and then ENTER to exit programming.



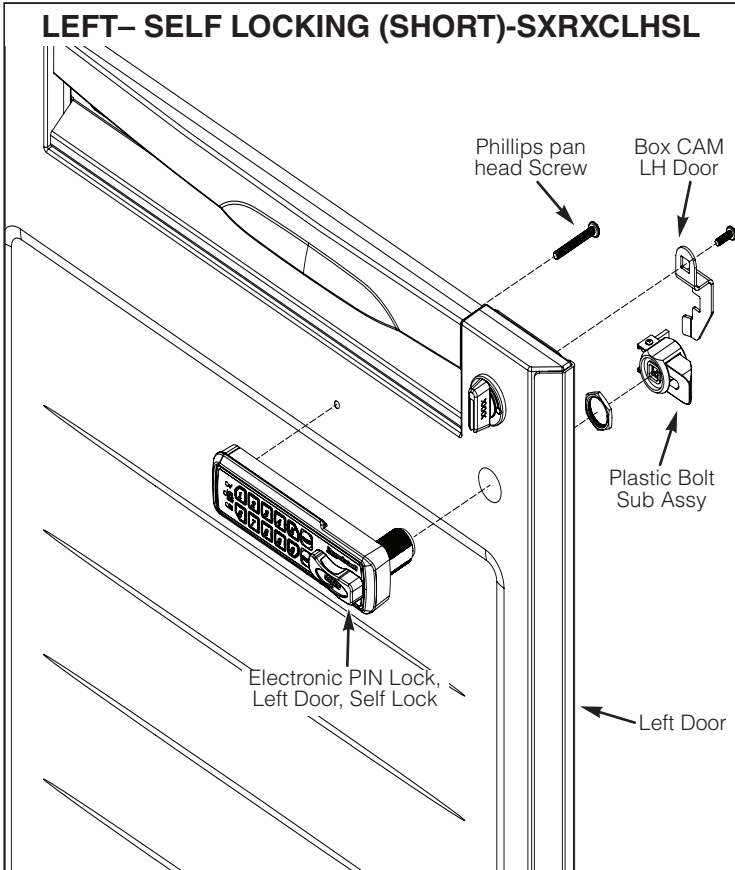
**RIGHT- SELF LOCKING (SHORT)-SXRXCCLHSR**



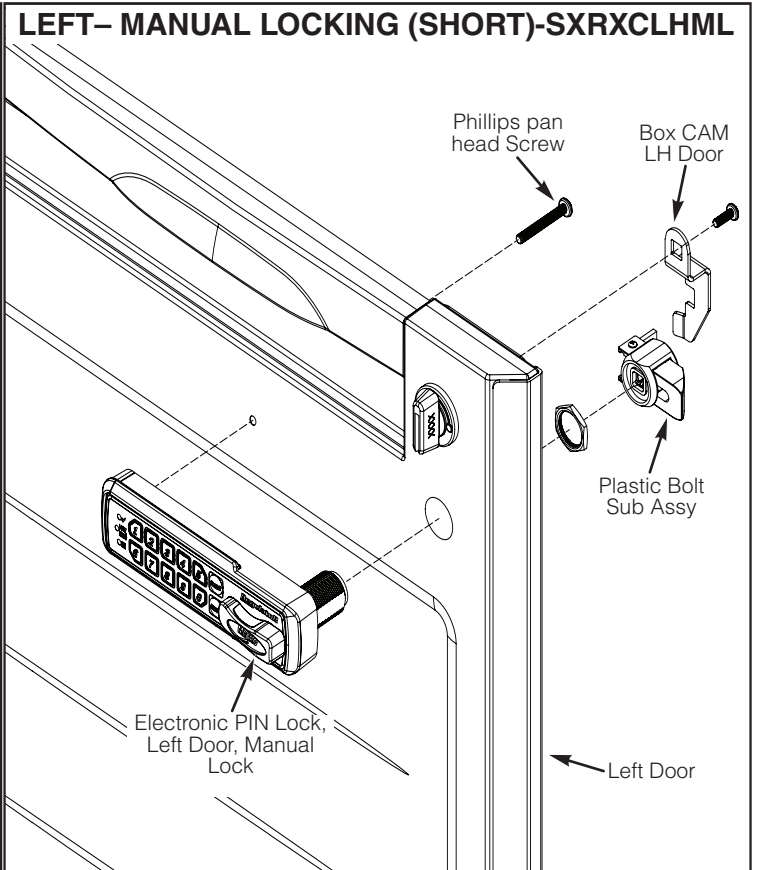
**RIGHT- MANUAL LOCKING (TALL)-SXRXCCLHMR**

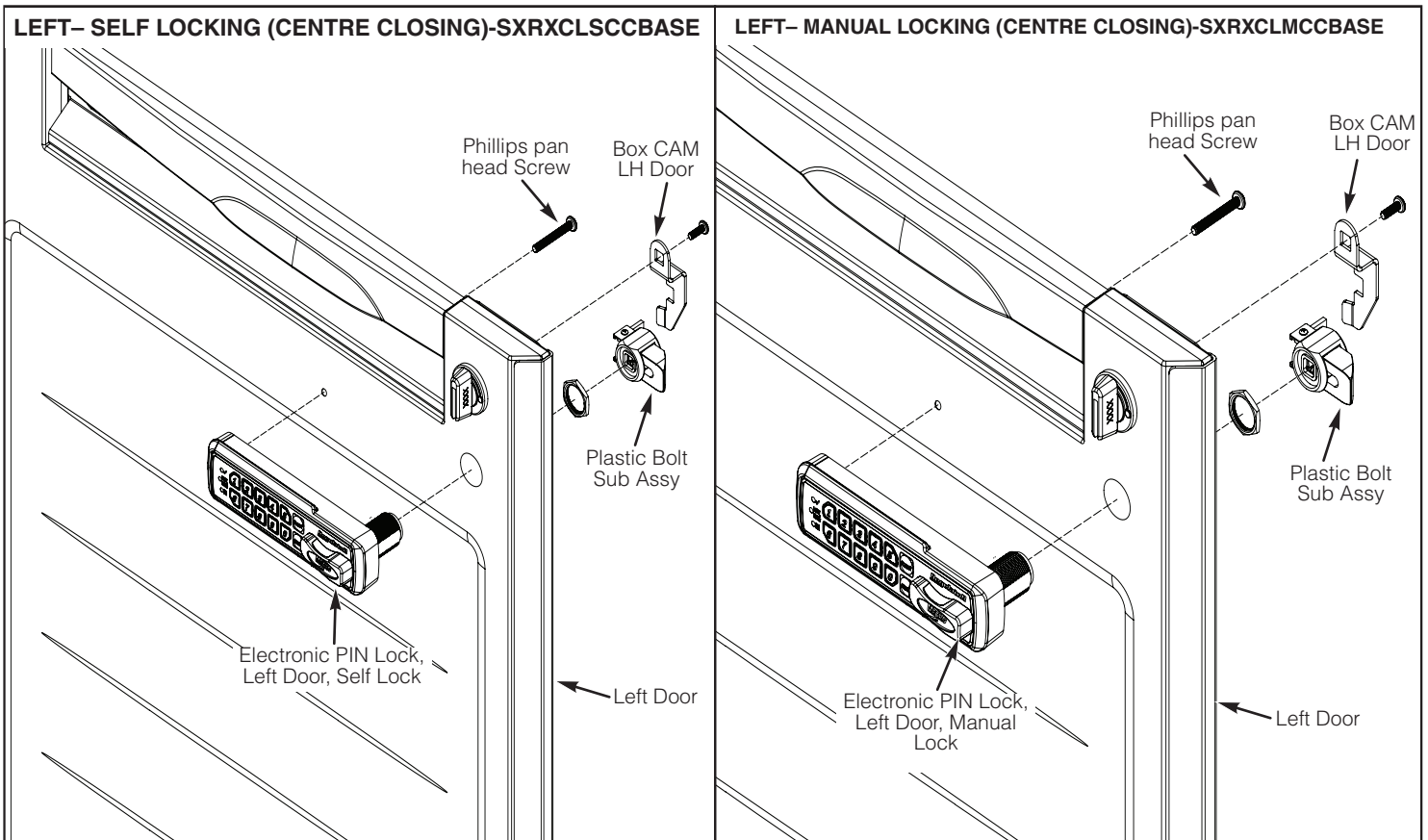
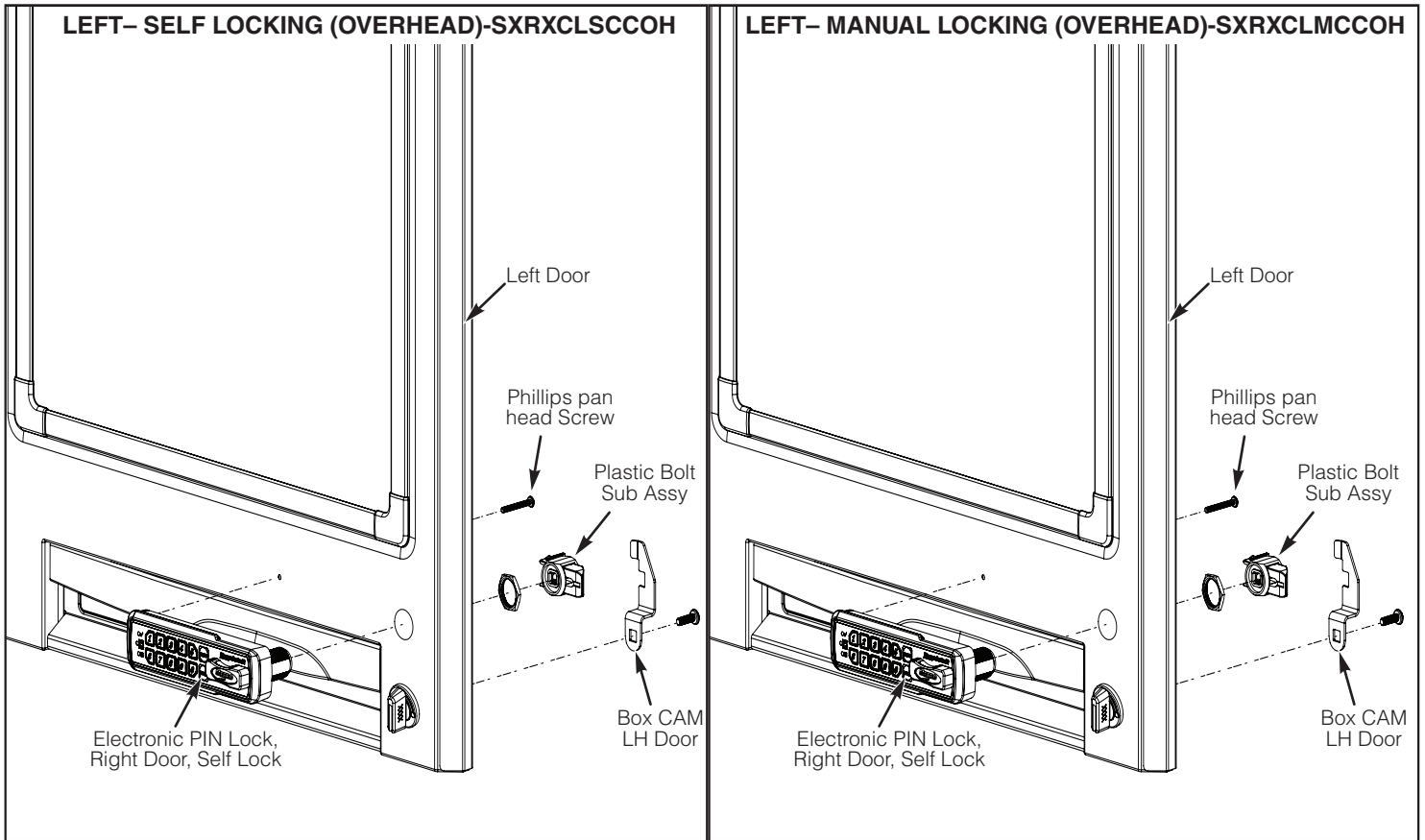


**LEFT- SELF LOCKING (SHORT)-SXRXCCLHSL**



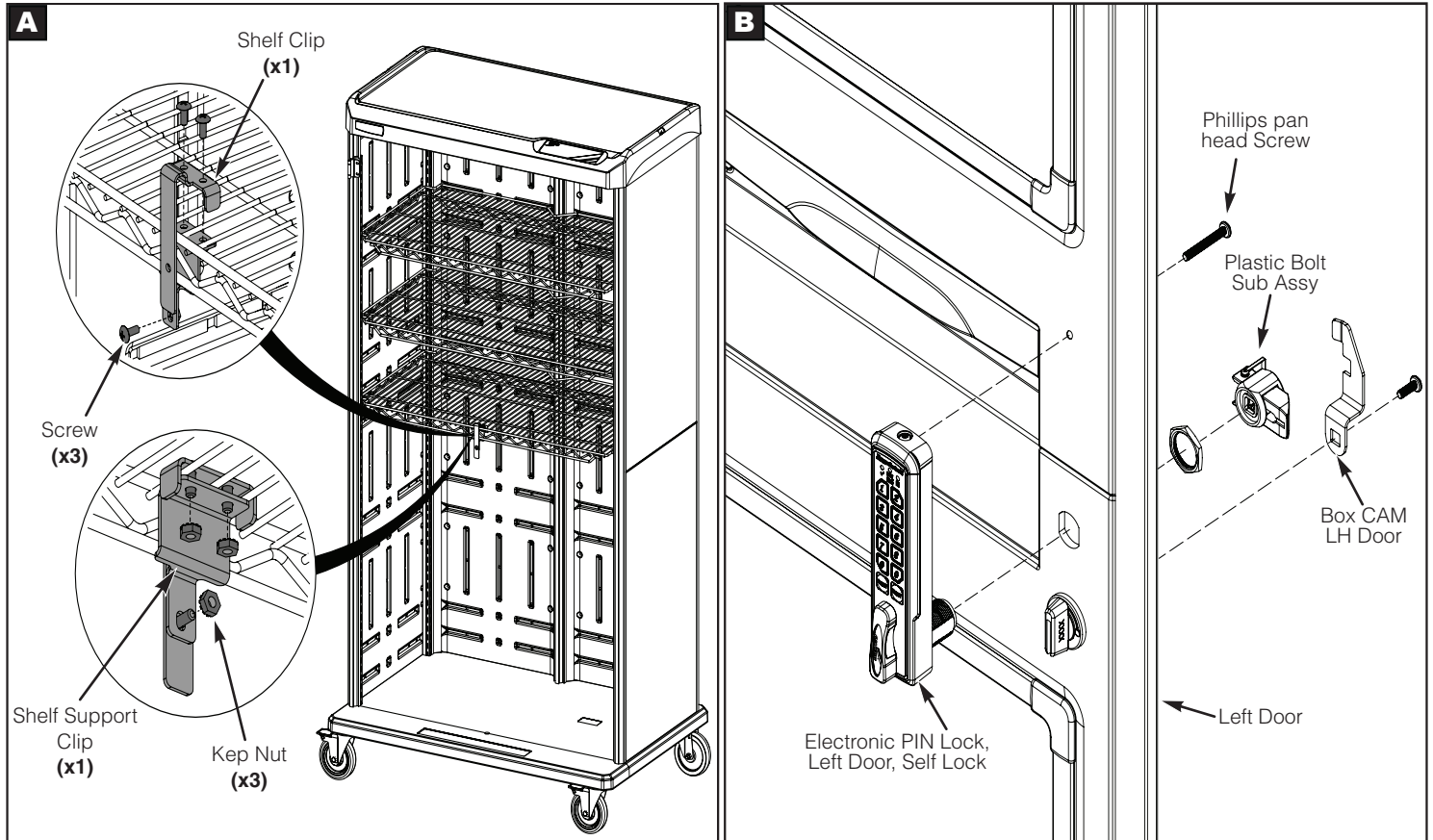
**LEFT- MANUAL LOCKING (SHORT)-SXRXCCLHML**







**DOUBLE DOOR- SELF / MANUAL LOCKING(SRXCLSCC / SRXCLMCC)**

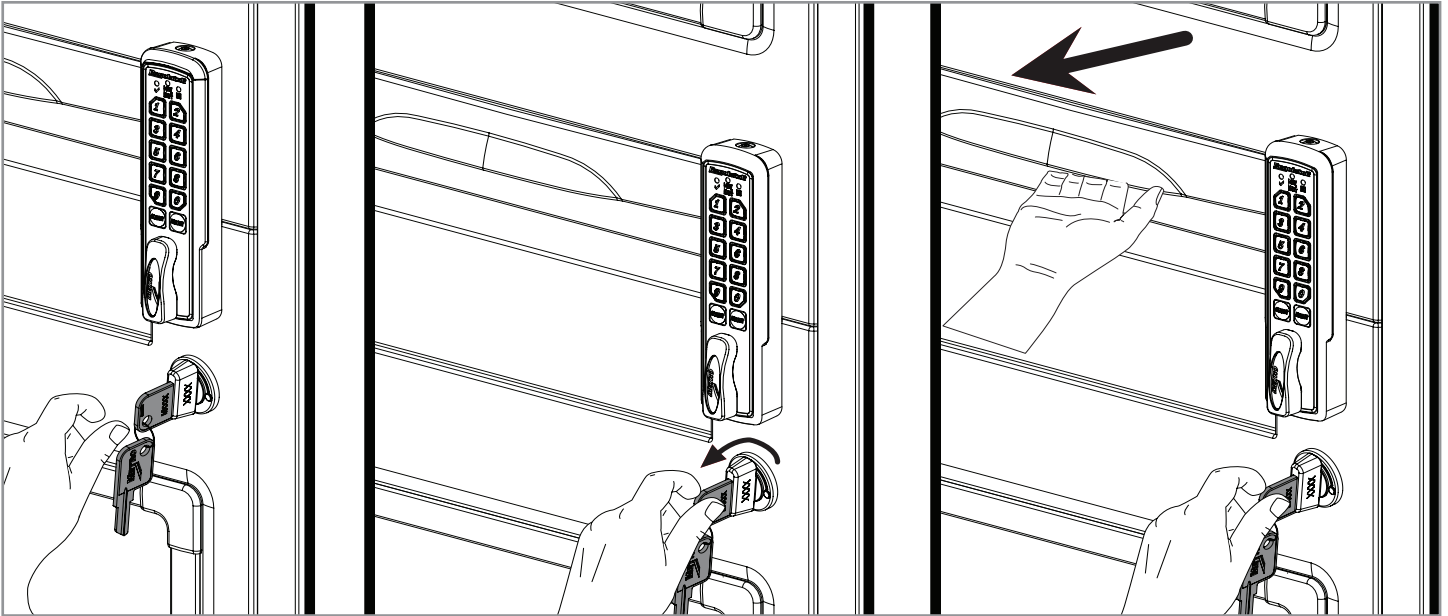


**REPLACEMENT PARTS**

Item	Part No.	Description
1	RPSRXCLHSL	Repl Lock Kit Self Locking LH Horiz Short Single Door
2	RPSRXCLHSR	Repl Lock Kit Self Locking RH Horiz Short Single Door
3	RPSRXCLVSL	Repl Lock Kit Self Locking LH Verti Tall Single Door
4	RPSRXCLVSR	Repl Lock Kit Self Locking RH Vert Tall Single Door
5	RPSRXCLHML	Repl Lock Kit Manual Locking LH Horiz Short Single Door
6	RPSRXCLHMR	Repl Lock Kit Manual Locking RH Horiz Short Single Door
7	RPSRXCLVML	Repl Lock Kit Manual Locking LH Vert Tall Single Door
8	RPSRXCLVMR	Repl Lock Kit Manual Locking RH Vert Tall Single Door
9	RPSRXCLSCC	Repl Lock Kit Self Lock Double Door
10	RPSRXCLMCC	Repl Lock Kit Manual Lock Double Door
11	RPSRXCLSCCBASE	RP Electronic PIN Lock Kit, Self Locking, Base, Double Door, Single Bay
12	RPSRXCLMCCBASE	RP Electronic PIN Lock Kit, Manual Locking, Base, Double Door, Single Bay
13	RPSRXCLSCCOH	RP Electronic PIN Lock Kit, Self Locking, Overhead, Double Door, Single Bay
14	RPSRXCLMCCOH	RP Electronic PIN Lock Kit, Manual Locking, Overhead, Double Door, Single Bay

## SINGLE WIDE UNLOCK / LOCK USING KEY OVERRIDE AND ELECTRONIC PIN LOCK

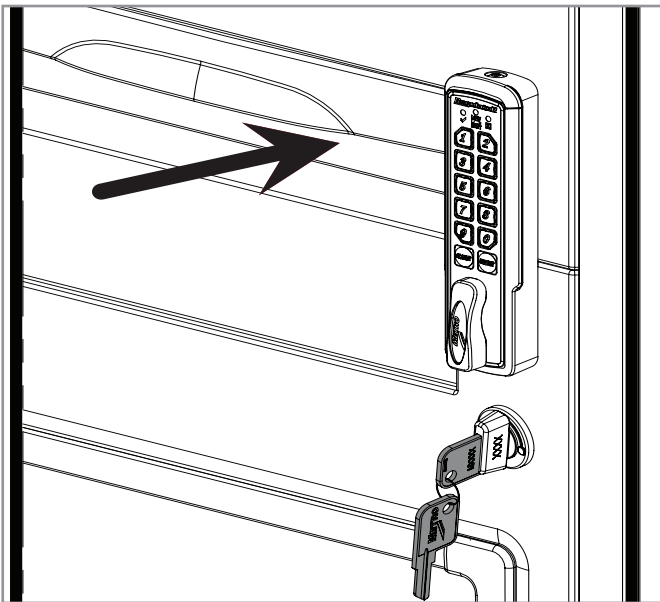
### Unlock using Key Override



#### To unlock the cabinet, using key override:

1. Rotate the key in counter clock-wise direction, and hold the key in that position.
2. To open, pull the cabinet door.

### Lock using Key Override



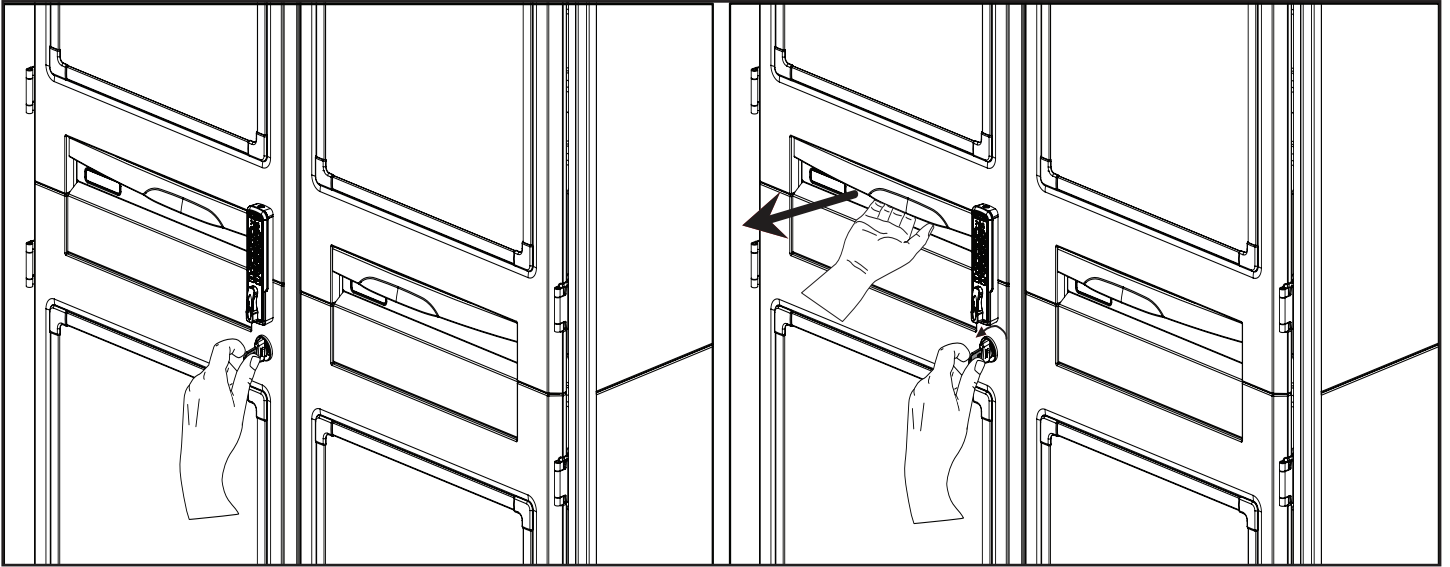
#### To lock the cabinet, using key override:

1. To close, push the cabinet door.
2. The door gets lock automatically.

**NOTE:** Remove key from key override when not in use.

## DOUBLE WIDE UNLOCK / LOCK USING KEY OVERRIDE AND ELECTRONIC PIN LOCK

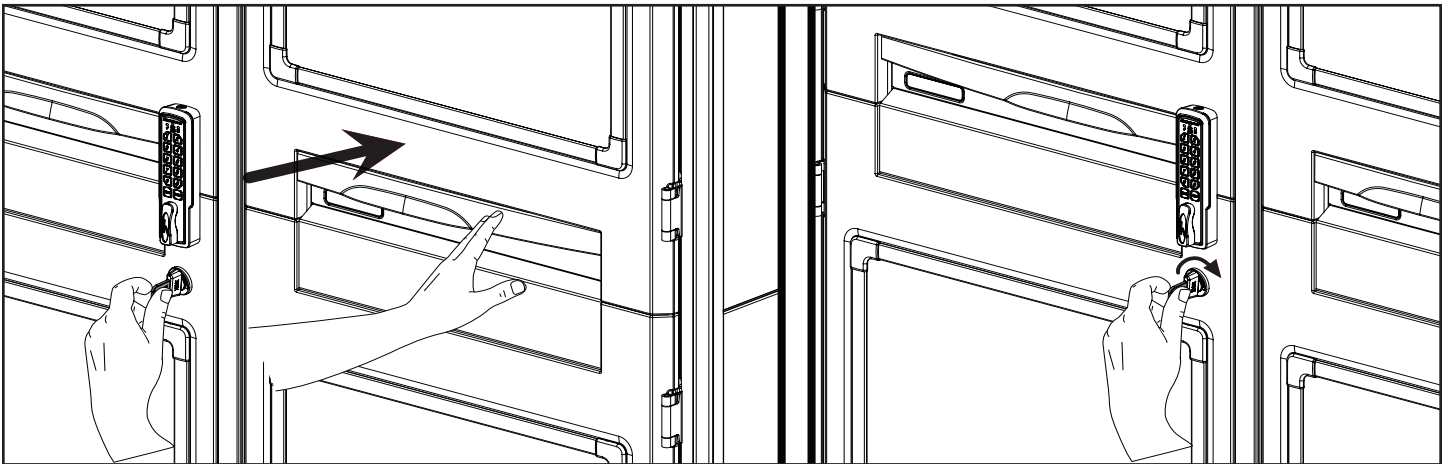
### Unlock using Key Override



#### To unlock the cabinet, using key override:

1. Rotate the key in counter clock-wise direction, and hold the key in that position.
2. To open, pull the left cabinet door.

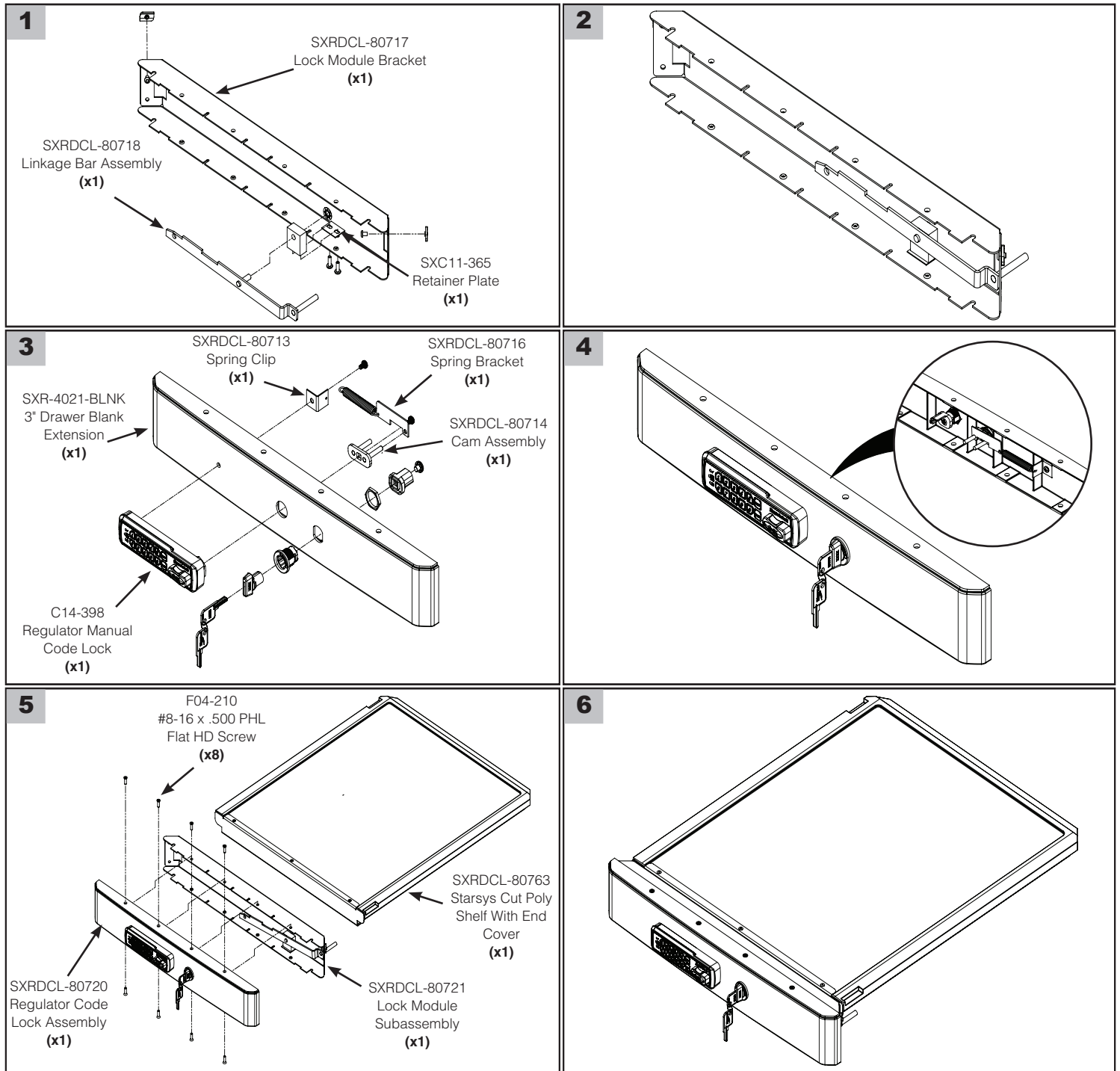
### Lock using Key Override



#### To lock the cabinet, using key override:

1. To close, first push the right cabinet door and then the left cabinet door.
2. The door gets lock automatically.

# PIN Locking (Manual) For Bank Of Drawers (SXRXCLEDWR):



\* Save this document for future application, load rating and/or safety reference.



We put space to work.

