

# The ultimate fleet management experience.



Watch Our Video

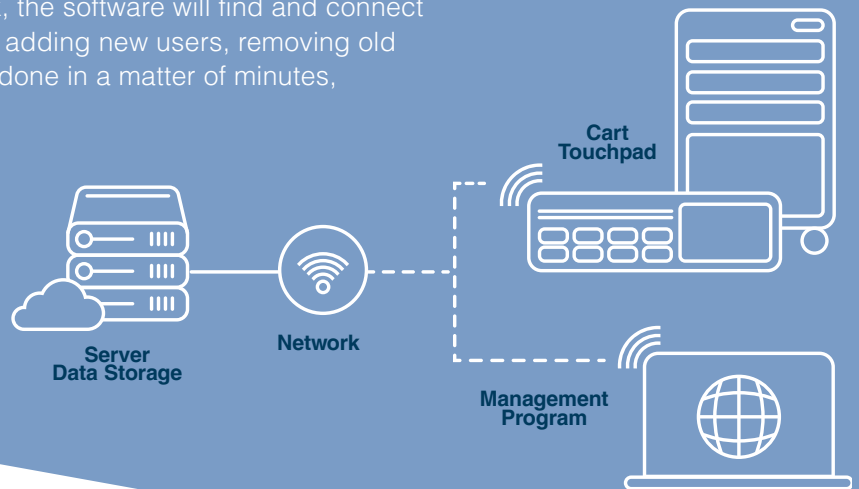
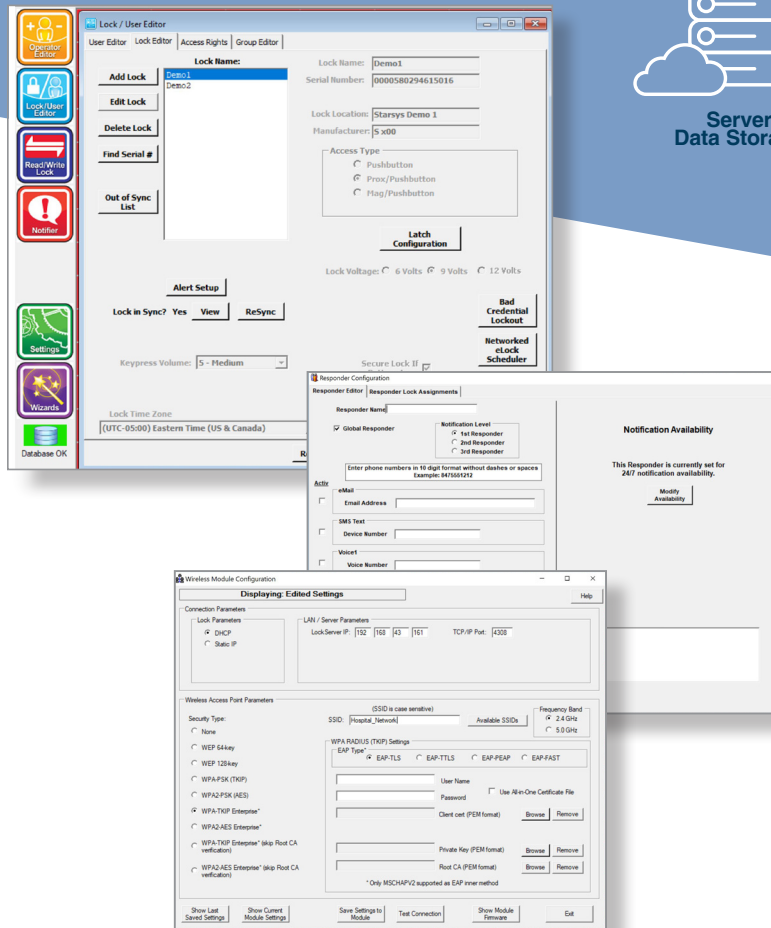
## Why Wireless?

Wireless touchpad communication is a convenience feature for the management of user access and cart settings for carts equipped with a wireless touchpad. Wireless communication saves countless steps finding carts in need of update, and countless hours that would be spent updating carts individually. By simplifying the management of users and cart settings, security of the carts is enhanced by facilitating the removal of old users and the addition of new, keeping users current and eliminating the need to share IDs and pass codes.



# How it Works.

Wireless works in conjunction with the cart's Lock Management Software that may be utilized remotely. Managing users and carts settings in the software, that can be loaded onto a conveniently located laptop, eliminates the need to re-enter redundant data into each cart. Enter the data one time into the software, and then let the software do the rest. Once the carts and laptop are linked on the facility's network, the software will find and connect with each cart to synchronize the latest data. Now, adding new users, removing old users, resetting auto-lock timers and more can be done in a matter of minutes, keeping the carts secure, and the staff satisfied.



## Make technology work for you.

Metro Wireless Cart Management System (CMS) provides healthcare facilities with a greater level of efficiency and control when managing their cart fleet. The easy-to-use software allows administrators to remotely manage users and cart configurations, in addition to providing access to valuable reporting and auditing tools.

**Wireless cart management is an available option on the following Metro cart platforms:**

- ☒ Flexline
- ☒ Lionville
- ☒ Starsys

Visit [www.metro.com](http://www.metro.com) or call 1-800-992-1776.

LO7-192 6/22

© 2022 InterMetro Industries Corporation, Wilkes-Barre, PA 18705



We put space to work.

an Ali Group Company



The Spirit of Excellence