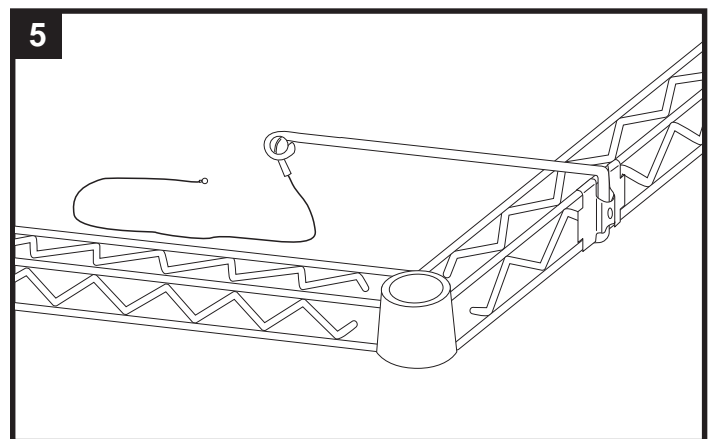
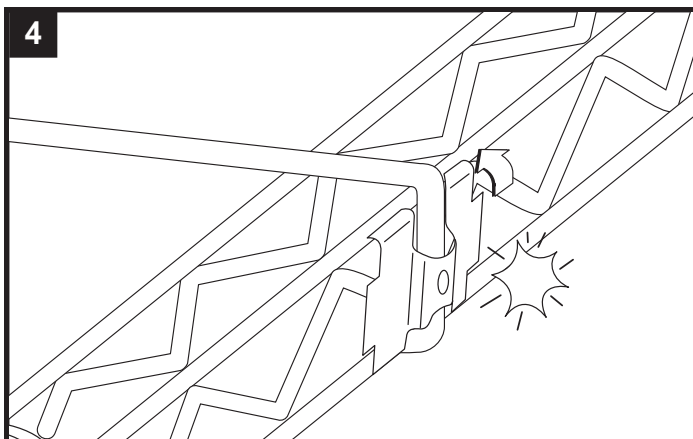
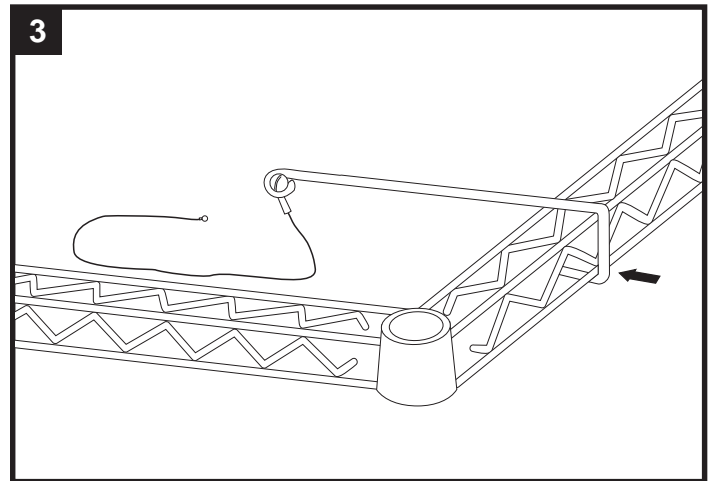
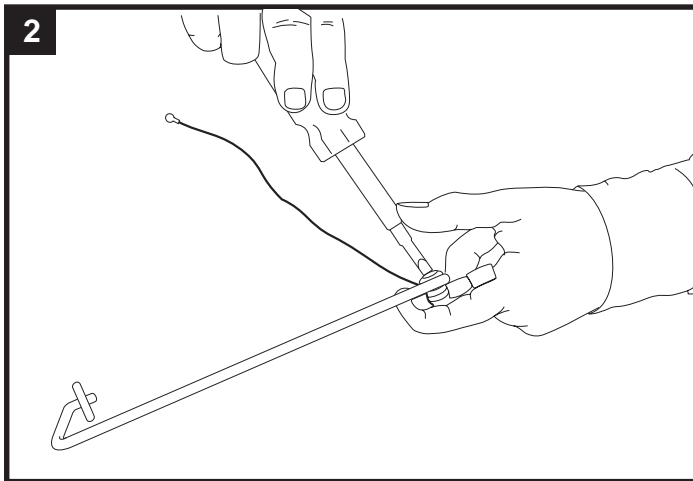
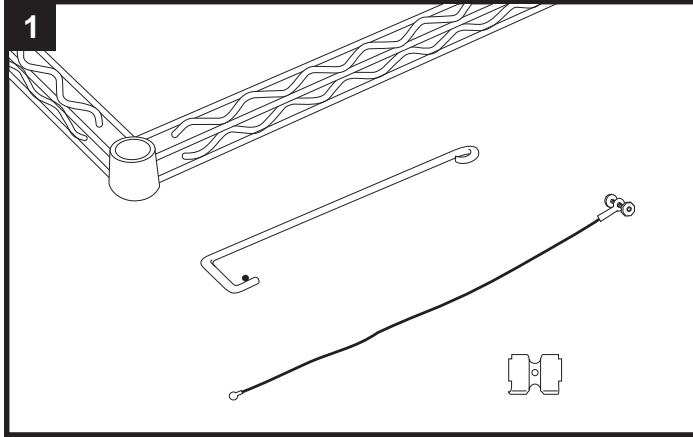


# Grounding Bracket and Cable Kit

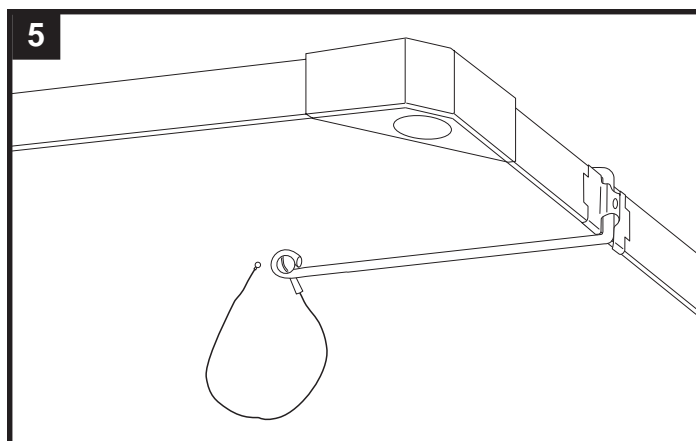
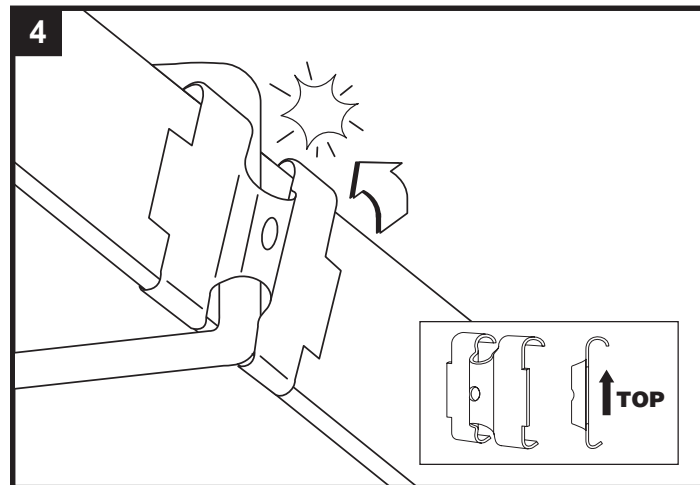
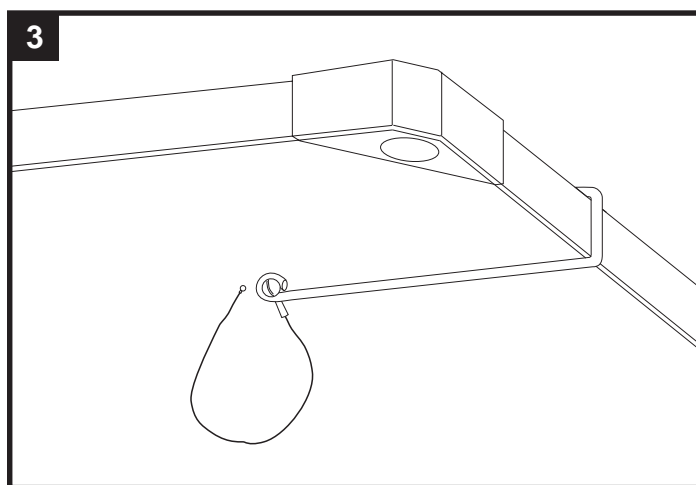
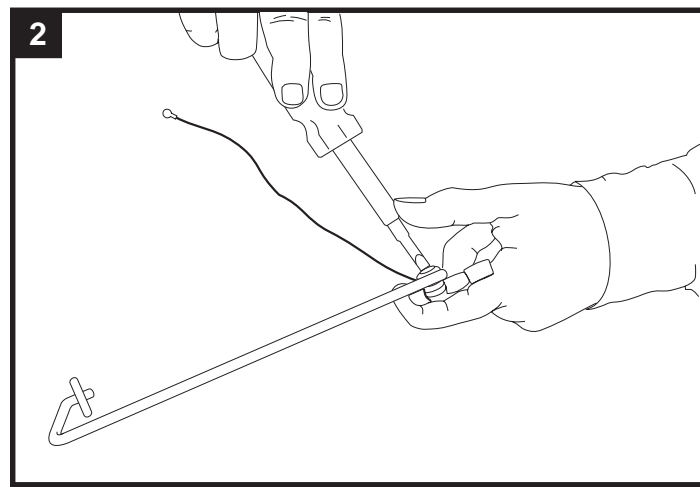
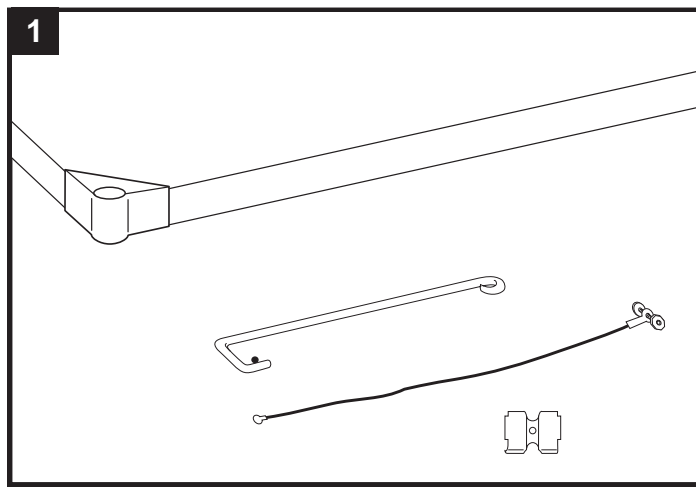
## ASSEMBLY INSTRUCTIONS



**InterMetro Industries Corporation**  
North Washington Street, Wilkes-Barre, PA 18705  
For Product Information Call: 1-800-433-2232  
Visit Our Web Site: [www.metro.com](http://www.metro.com)

**ASSEMBLY  
INSTRUCTIONS**  
*For Grounding Bracket  
and Cable Kit*

# Grounding Bracket and Cable Kit



Metro's grounding cable provides an effective method of electrostatic discharge for any Metro wire shelf unit when used in conjunction with aluminum split sleeves and it ensures a conductive path-to-ground when used with ESD flooring.



**InterMetro Industries Corporation**  
North Washington Street, Wilkes-Barre, PA 18705  
For Product Information Call: 1-800-433-2232  
Visit Our Web Site: [www.metro.com](http://www.metro.com)

L01-319  
10/98

Information and specifications are subject to change without notice. Please confirm at time of order.