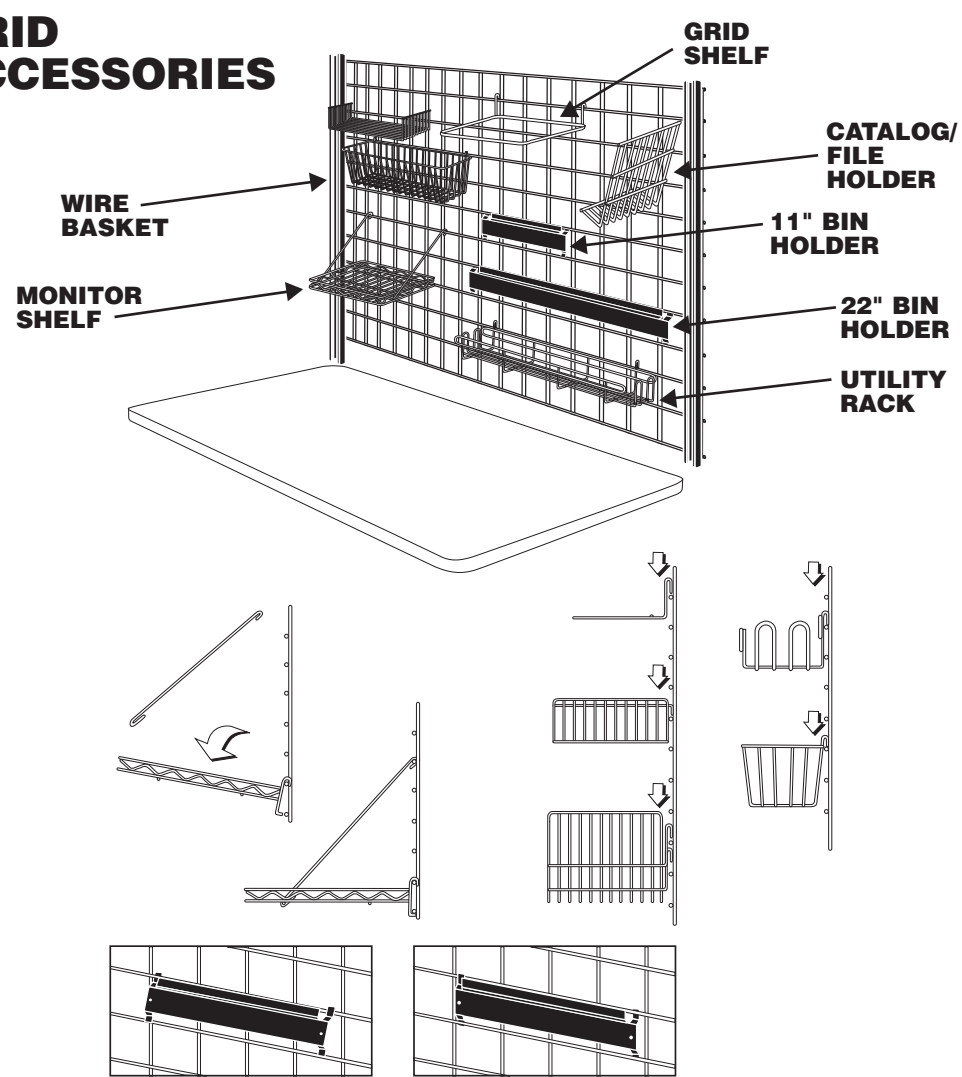


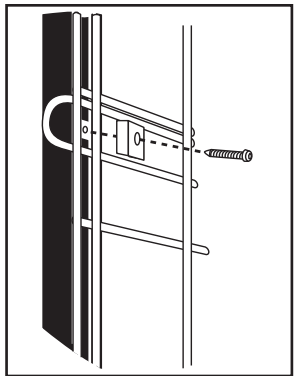
GRID AND ACCESSORIES

GRID ACCESSORIES



Attach bin holders by first sliding top corner tabs up behind a horizontal grid rod, then press bin holder against the grid and slide down until the bottom corner tabs are behind the next horizontal grid rod down.

GRID INSTALLATION

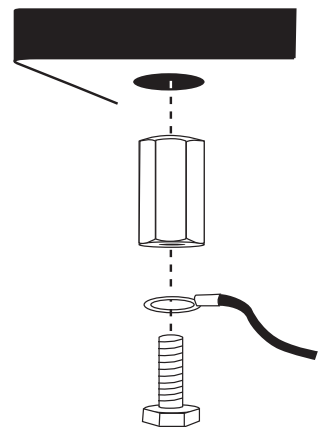


Rear of Upright

Attach wire grid according to your requirements. Typically, it's a good idea to install top of wire grid 12"-18" from top of uprights.

ESD BENCHTOP

GROUNDING INSTRUCTIONS



WORKBENCH SYSTEM

Assembly Instructions

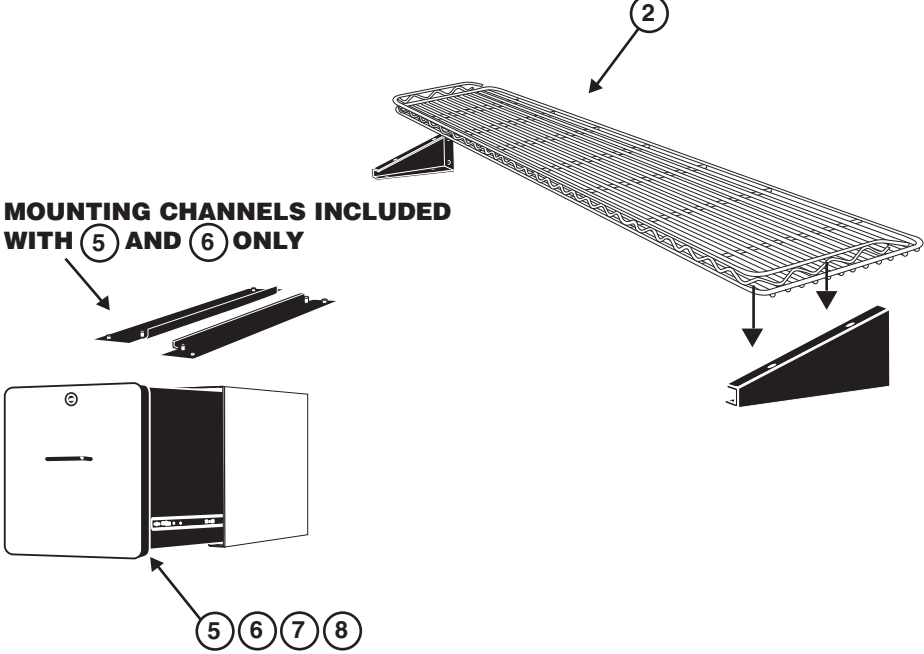
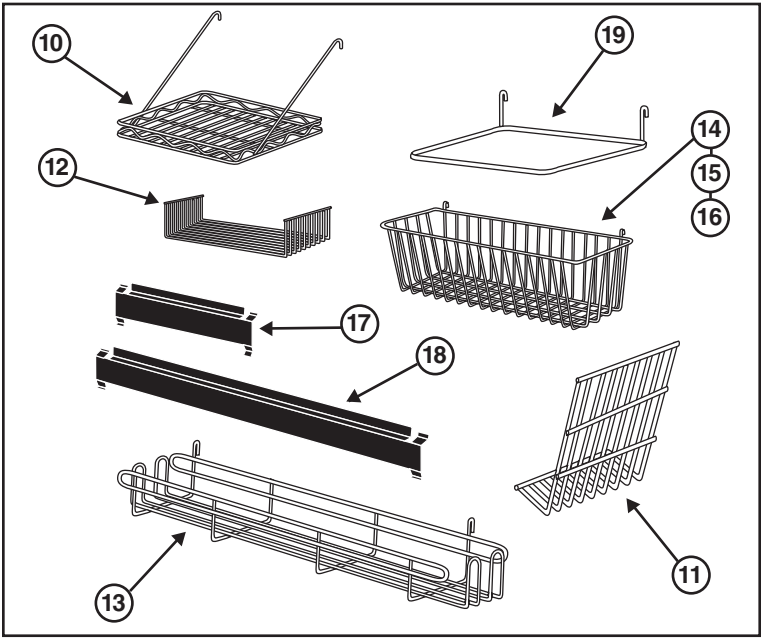
MODEL NO.	DESCRIPTION
MSB3060C	30 x 60, ESD
MSB3060L	30 x 60, Non-ESD
MSB3072C	30 x 72, ESD
MSB3072L	30 x 72, Non-ESD
MSB3660C	36 x 60, ESD
MSB3660L	36 x 60, Non-ESD
MSB3672C	36 x 72, ESD
MSB3672L	36 x 72, Non-ESD



InterMetro Industries Corporation
North Washington Street
Wilkes-Barre, PA 18705
For Product Information, Call (800) 433-2232
Visit Our Web Site: www.metro.com

I. EXPLODED VIEW — PARTS AND ACCESSORIES GUIDE

ASSEMBLY TIP: Two (2) Allen wrenches are provided for bench assembly. However, a Ball-Socket Allen wrench will shorten assembly time should you have access to one.



Weight Capacities

Work Surfaces
1,000 lb. (453kg) evenly distributed

Cantilevered Shelves
100 lb. (45kg) evenly distributed weight

MSA-SMH Monitor Holder
45 lb. (21kg) evenly distributed weight

PBA-MS Monitor Shelf
50 lb. (23kg) evenly distributed weight

6" Drawer
30 lb. (14kg)

12" Drawer
40 lb. (18.4kg)

MSA-SBH Bin Panel Holder
50 lb. (23kg) evenly distributed weight

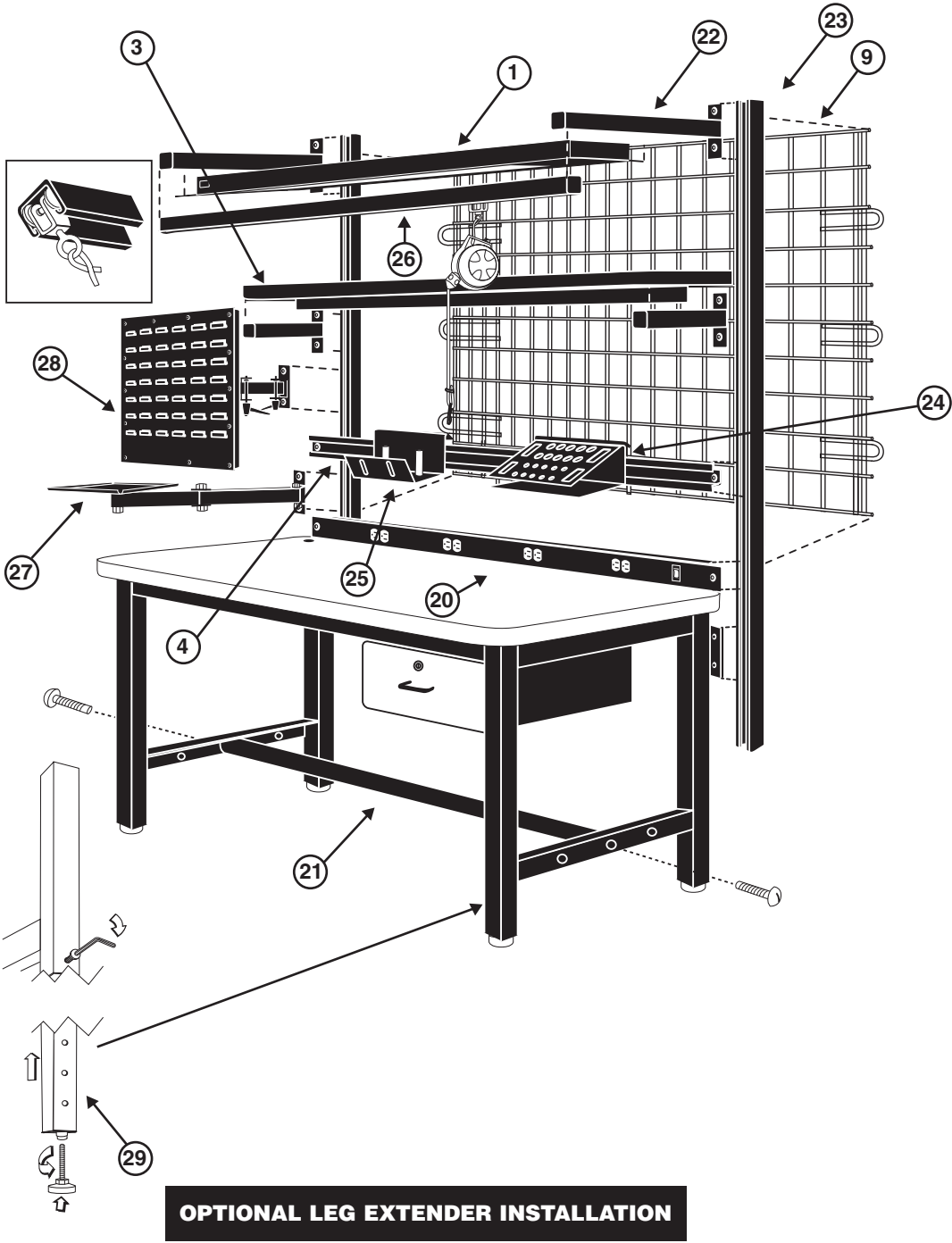
Electrical Specifications

LIGHT (MSA-LA60/MSA-LA72)

- UL Listing Pending
- Accepts two 48" (122cm) 40WT8 fluorescent bulbs (*not included*)
- 7 foot cord

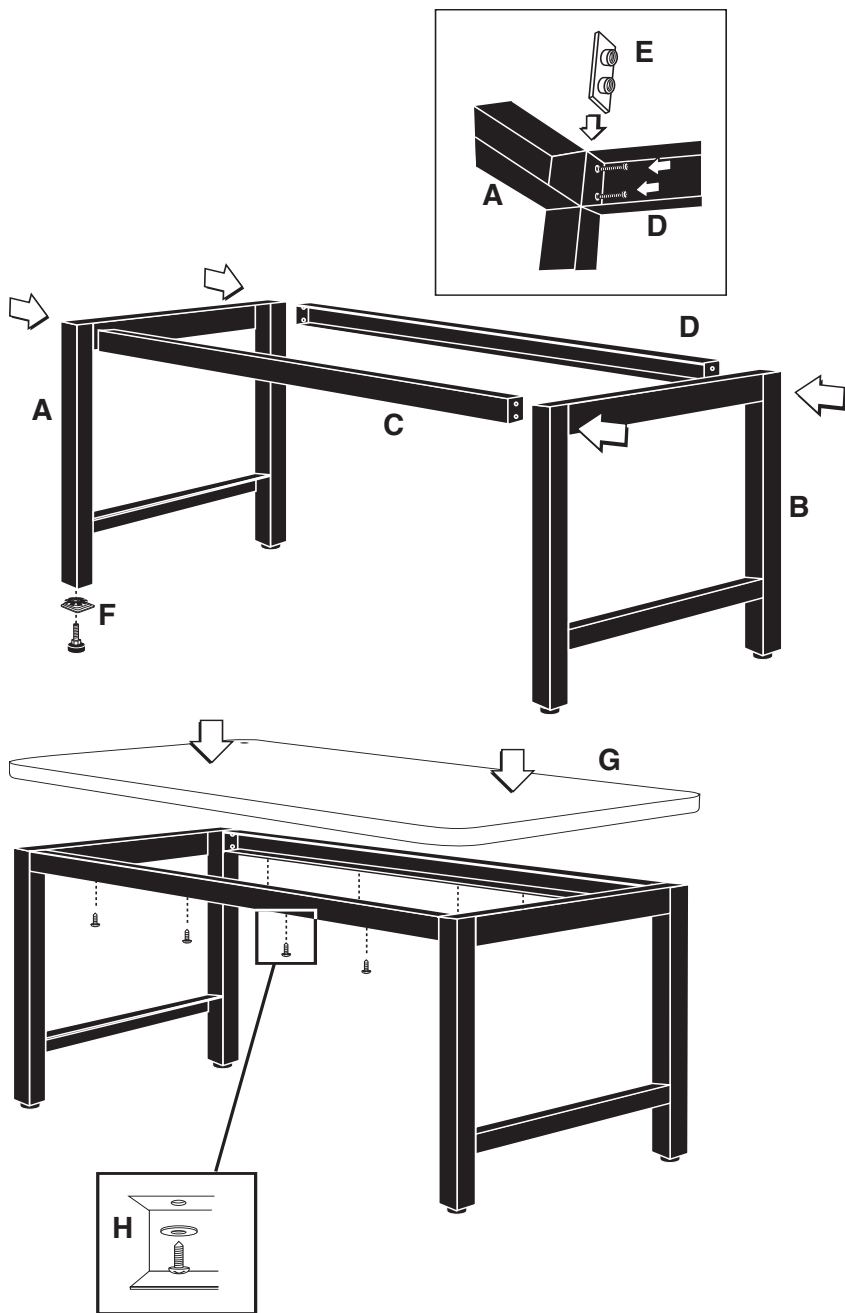
POWER STRIP (MSA-PS60/MSA-PS72)

- 8 outlets
- 115V, 15A, 60Hz continuous service
- Includes ON/OFF switch
- Protected by 15A circuit breaker
- 8 foot cord



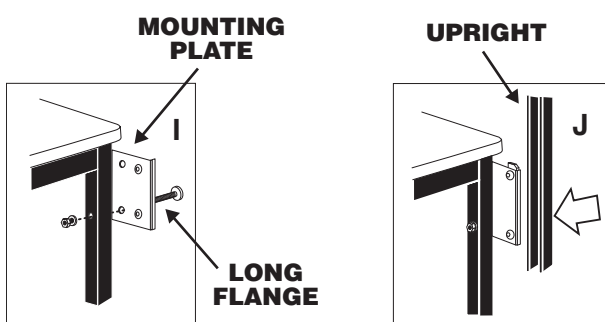
AVAILABLE ACCESSORIES							
KEY	60" MODEL NO.	72" MODEL NO.	DESCRIPTION	KEY	60" MODEL NO.	72" MODEL NO.	DESCRIPTION
1	MSA-LA60	MSA-LA72	Light Fixture with Mounting Arms	16	H212C	H212C	Wire Basket
2	MSA-WS60	MSA-WS72	Cantilevered Shelf — Wire	17	PBA-1BH	PBA-1BH	11" Bin Holder
3	MSA-LAM60	MSA-LAM72	Cantilevered Shelf — Laminate	18	PBA-2BH	PBA-2BH	22" Bin Holder
4	MSA-BR60	MSA-BR72	Bin Rail	19	PBA-PFH	PBA-PFH	Hanging File Folder
5	MSA-SDL6	MSA-SDL6	6" Drawer, Locking, Starter	20	MSA-PS60	MSA-PS72	Power Strip
6	MSA-SDL12	MSA-SDL12	12" Drawer, Locking, Starter	21	MSA-FR60	MSA-FR72	Foot Rest
7	MSA-ADL6	MSA-ADL6	6" Drawer, Locking, Add-on	22	MSA-MARMS	MSA-MARMS	Overhead Mounting Arms
8	MSA-ADL12	MSA-ADL12	12" Drawer, Locking, Add-on	23	MSA-UR60	MSA-UR60	Uprights
9	MSA-WG60	MSA-WG72	Wire Grid	24	MSA-TSH	MSA-TSH	Tool Storage Hanger
10	PBA-MS	PBA-MS	Monitor Shelf	25	MSA-SSH	MSA-SSH	Solder Spool Holder
11	PBA-CHD	PBA-CHD	Catalog/File Holder	26	MSA-TT60	MSATT72	Tool Track and Trolley
12	PBA-GSD	PBA-GSD	Grid Shelf	27	MSA-SMH	MSA-SMH	Swing-Arm Monitor Holder
13	R24BR	R24BR	Utility Rack	28	MSA-SBH	MSA-SBH	Swing-Arm Bin Panel Holder
14	H209C	H209C	Wire Basket	29	MSA-LE	MSA-LE	Leg Extenders (4)
15	H210C	H210C	Wire Basket				

II. BASIC WORKBENCH ASSEMBLY



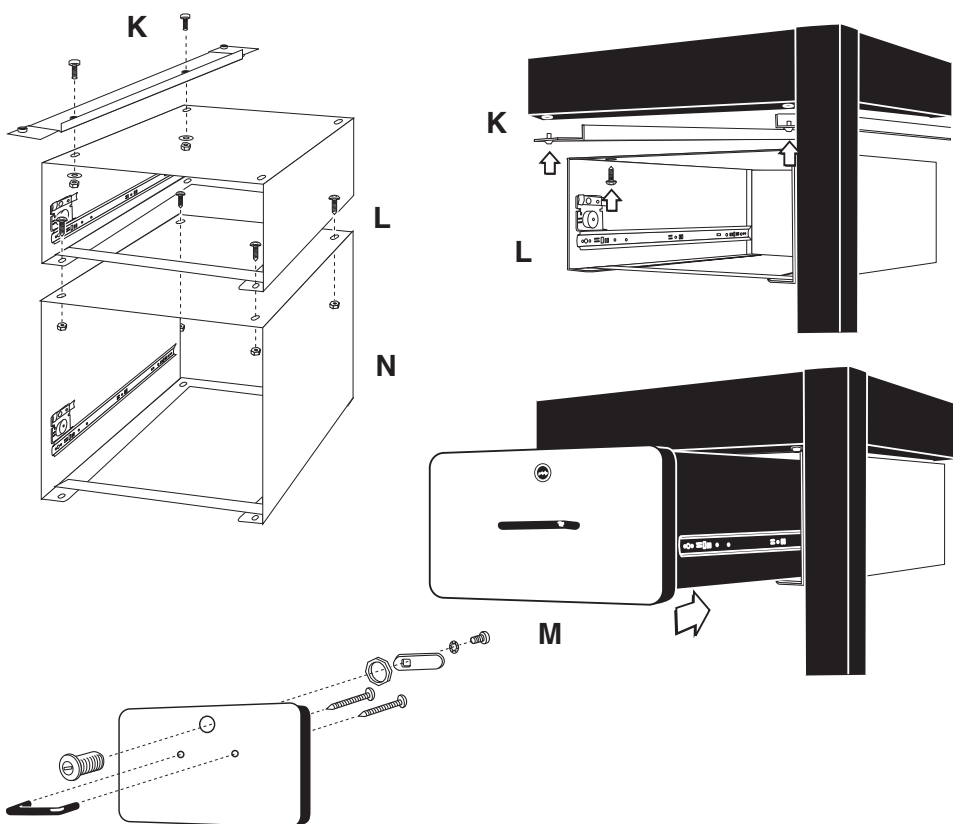
1. Open cartons and identify the two leg assemblies (A & B) and rails (C & D).
NOTE: Rear right and left legs of bench will have pre-drilled hole for upright plate attachment (I) shown below. Top side of rail will have pre-drilled holes for mounting top.
2. Locate top of leg assemblies (A & B) and attach rails (C & D) to legs with bracket (E) hardware and Allen wrench provided.
3. Install foot inserts to bottom of legs by placing them over the legs and tapping them into position with a mallet. If optional leg extenders are being installed, refer to diagram on opposite page.
4. Screw the leveling legs into the inserts and adjust so that table is level.
5. If installing a grounding cable to the table top, it must be attached to the underside of the top prior to installing the top. See grounding diagram on page 4.
6. Position the table top (G) so that the rear of the top is flush with the back of the table frame and has equal overhang on both ends. Top must be flush with back of the table, otherwise it may interfere with upright mounting (shown below).
7. Attach the top to the frame by inserting the wood screws (H) through the holes in the frame assembly and screwing them into the underside of the top (G) in eight places.
8. Make certain all bolts are securely tightened.

UPRIGHT MOUNTING INSTRUCTIONS



1. Orient the mounting brackets (I) so that the short flange is facing inward (toward the table leg) and the long flange facing away from the table.
 2. Attach the bracket to the table leg with the long bolt, washer, and nut.
 3. Position the upright (J) against the mounting bracket and attach to the bracket using the short bolt and rectangular nut. Follow the upright accessory mounting instruction shown at the top of page 3.
 4. The upright should always be attached using two bolts and at minimum, it should be flush with the bottom of the bracket or protrude below.
- (See overleaf for instructions on installation of upright mounted accessories.)

OPTION: ATTACH DRAWER ASSEMBLY

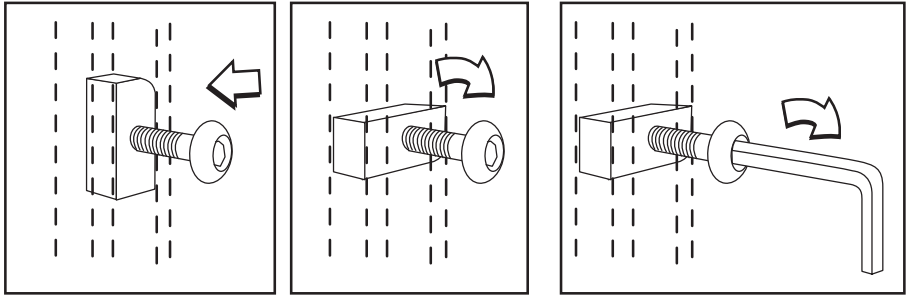


1. Open carton and identify the drawer mounting channels and mounting hardware.
2. Install the mounting channels (K) on the underside of the table frame; make sure that the short vertical leg of the channel is to the inside of the drawer on both channels. Tighten the hardware securely.
3. Remove the drawer (M) from the drawer frame (L) by extending the drawer on its slides and then flipping the slide safety stop downward to allow the drawer to be disengaged from the frame.
4. Position the drawer frame (L) below the mounting channels (K) and mount to the channels using the hardware provided. Tighten the hardware securely.
5. Attach drawer front, handle and lock to drawer.
6. Reinstall the drawer to the drawer frame.
7. To install optional add-on drawers (N), remove drawers from frames. Bolt frames together in four places using the hardware provided with the add-on drawer.

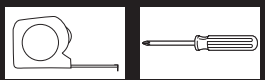
TYPICAL INSTALLATION FOR UPRIGHT MOUNTED ACCESSORIES



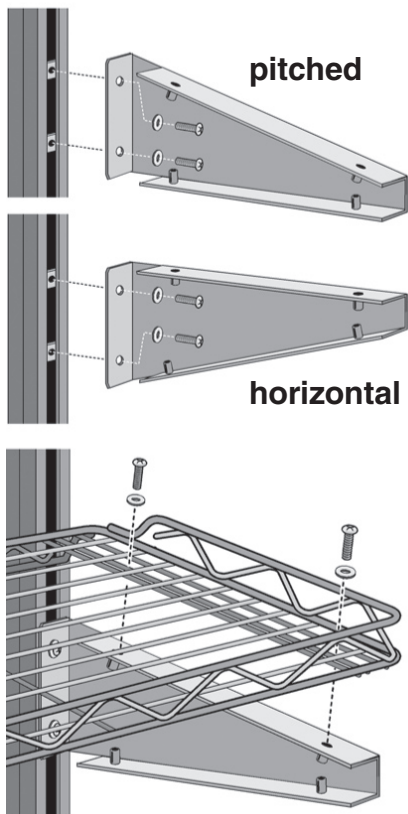
1. With the exception of the wire shelf (see below), all accessories that mount directly to the uprights are attached in the same manner. Locate the Allen head bolts and the rectangular nuts that are provided with each accessory.
2. Insert the bolts through the mounting flange of the accessory and attach the nuts to the bolts by threading them on just a few threads. Make certain that you thread the bolts into the nuts on the side of the nut that has the double-serrated grooves on either side of the threaded hole.
3. Position the accessory on the upright in the desired location. Orient the rectangular nuts vertically so that they will fit into the slot in the upright. Insert the Allen wrench into the nut and begin to tighten the bolt. ***Make certain that the nut rotates a full 90° behind the flanges of the upright.*** Check that the accessory is at the desired position before tightening the bolt completely.



WIRE SHELF



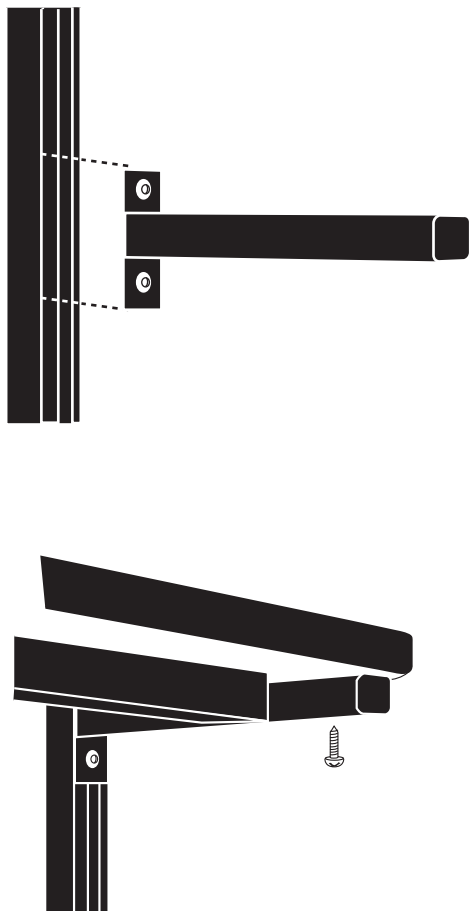
1. Determine whether the wire shelf will be installed horizontally or pitched (see below).
2. Position the mounting brackets in the desired orientation and assemble with the rectangular nuts as shown above, also using the Philips head screws and flat washers included in the hardware bag.
NOTE: The short flanges of the mounting brackets should face inward when properly installed.
3. Position the shelf on the mounting brackets and attach by inserting two screws at each end through the shelf and threading into the bracket. There are three narrowly-spaced wires running front-to-back on the shelf; the screws should go between the first and second wires (starting from the outside edge of the shelf).



LAMINATE SHELF



1. Install the tubular shelf supports per the instructions above for upright mounted accessories.
2. Position the laminate shelf on top of the supports; attach the shelf to the supports by inserting the wood screws through the holes in the tubular supports and screwing them into the underside of the laminate shelf.



OVERHEAD LIGHT

BULBS NOT INCLUDED



1. Install the light support arms per instructions for upright mounted accessories (shown at top of page).
2. Position the light fixture below the support arms and attach to the brackets following the same process as the assembly of upright mounted accessories. **NOTE:** If tool track accessory is also to be mounted from support arms, position front of light fixture at least 4" in on either side of support arms.
3. To install bulbs, remove the two light diffuser positioning screws from the **front underside** of the light fixture. The screws are located approximately **1/3 of the way in from the end of the fixture.**
4. To expose the bulb socket, slide the light diffuser forward to allow the diffuser to drop out of the fixture at the rear.
5. Install the bulbs; replace the diffuser and reinstall the screws.



TWO (2) 48" 40 WATT T8 FLUORESCENT BULBS REQUIRED.