

## BASIC / ADVANCED / WIRELESS ELECTRONIC LOCK



### DESCRIPTION

**Basic/Advanced/Wireless Electronic Locks** – This instruction sheet covers part numbers and illustrations. Read the descriptions carefully to ensure desired part is ordered for replacement.  
Service Documentation - Do not leave with customer.

## NOTICE

**InterMetro Industries Corporation reserves the right to make improvements or changes to the products described in this manual at any time without notice.**

**While reasonable efforts have been made in the preparation of this document to assure its accuracy, InterMetro Industries Corporation assumes no liability resulting from any errors or omissions in this document, or from the use of the information contained herein.**

### **COPYRIGHT NOTICE:**

This manual is copyrighted. All rights reserved. This manual may be printed for personal use only. This manual, whole or in part, may not be copied, photocopied, reproduced, translated, or reduced to any electronic medium or machine-readable form for distribution. This manual, whole or in part, may not be modified without prior consent, in writing, from InterMetro Industries Corporation.

Copyright © 2020 by InterMetro Industries Corporation, 651 North Washington Street, Wilkes-Barre, PA 18705, U.S.A.

### **PLEASE NOTE:**

This illustrated parts catalogue is issued on condition that it is used only for the disassembly/assembly, identification of replacement parts in Advanced/Wireless Electronic Locks and is **NOT** disclosed to third parties except with the consent of InterMetro Industries Corporation.

### **PUBLISHED AS:**

Document No: L01-636

### **INTERMETRO CUSTOMER SERVICE**

#### *InterMetro Industries Corporation Contact Information*

**InterMetro Industries Corporation**

**651 North Washington Street**

**Wilkes-Barre, PA 18705**

**For Information on iMed Products, Call: 1-800-992-1776**

#### *InterMetro Customer Service*

**For all other customer service related issues, or if you need technical assistance, please call our customer service department at:**

**1-800-992-1776**

**+31 76 58 77550**

**+9714 811 8286**

**+65 6567 8003**

**Americas**

**Europe**

**Middle East**

**Asia-Pacific**

## TABLE OF CONTENTS

	<b>Pg No.</b>
Table of Contents .....	3
List of Figures .....	3
A. BATTERY TRAY ASSEMBLY .....	4
A. Battery Tray Assembly - Part Reference .....	5
A. Battery Tray Assembly - RP Kit .....	5
B. USB AND KEYPAD ASSEMBLY .....	6
B. USB and Keypad Assembly - Part Reference .....	7
B. USB and Keypad Assembly - RP Kit .....	7
C. PROXIMITY CARD READER ASSEMBLY .....	8
C. Proximity Card Reader Assembly - Part Reference .....	9
C. Proximity Card Reader Assembly - RP-Kit .....	9
D. MAIN MODULE ASSEMBLY .....	10
D. Main Module Assembly - Part Reference .....	11
D. Main Module Assembly - RP Kit .....	11
E. LockView 5 and LockView 5Pro Software .....	12
E. LockView 5 and LockView 5Pro Software - Part Reference .....	12
E. LockView 5 and LockView 5Pro Software - RP Kit .....	12

## LIST OF FIGURES

	<b>Pg No.</b>
Figure 1: Battery Tray Assembly .....	4
Figure 2: Location of USB and Keypad Assembly .....	6
Figure 3: Location of Proximity Card Reader Assembly .....	8
Figure 4: Location of Main Module Assembly .....	10

## A. BATTERY TRAY ASSEMBLY

Refer to Page 5 for Replacement Part Numbers, Description and Part Numbers

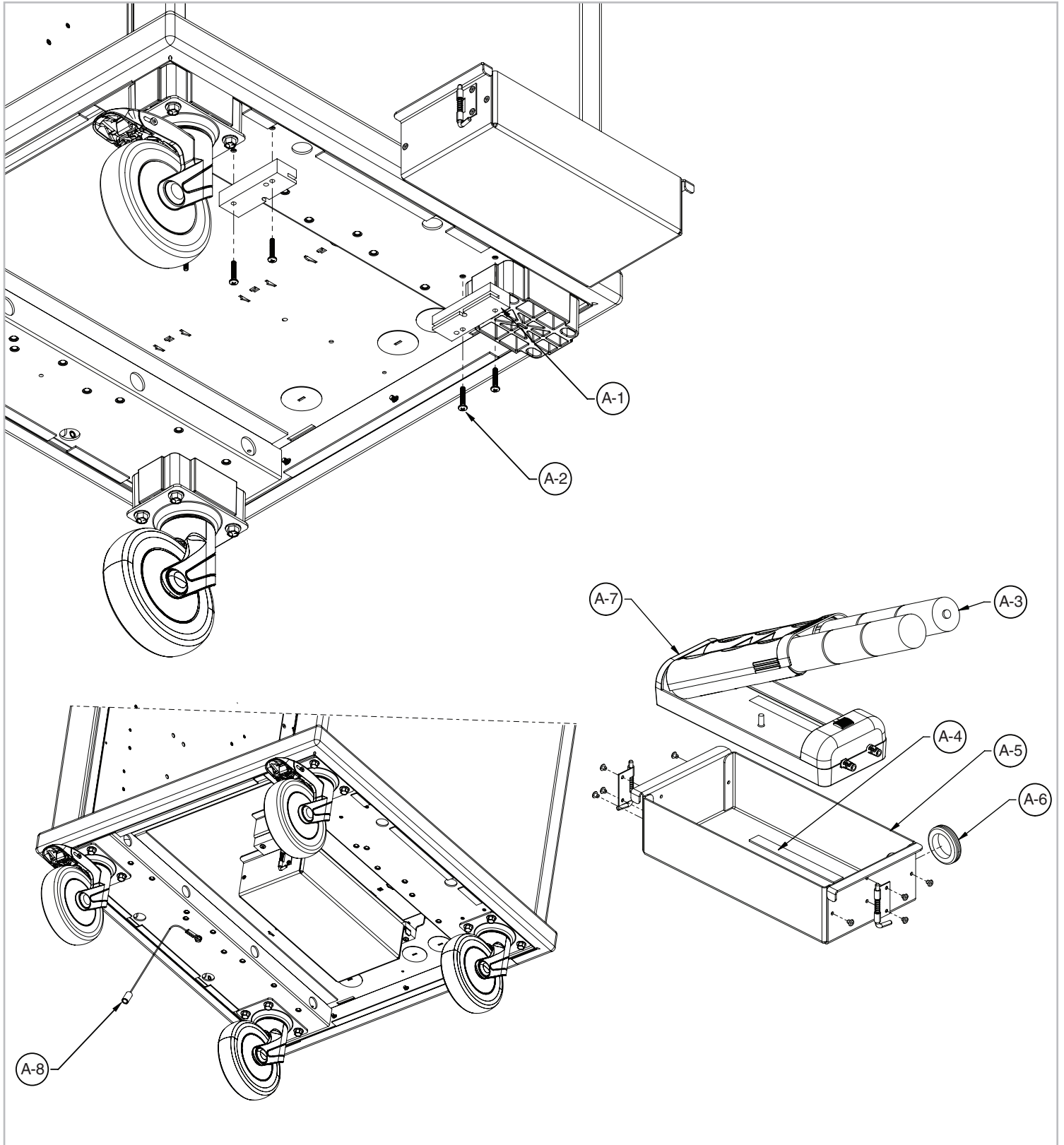


FIGURE 1: BATTERY TRAY ASSEMBLY

**A. Battery Tray Assembly - Part Reference**

Index #	Description	Quantity	Part No. / Drawing No.
A-1	Guide, CompX Battery Sliding Tray	2	C06-1306 / 80389
A-2	#8-32 x 1.25 Phillips Pan Head	4	F04-500
A-3	PC1300-Duracell, Procell	6	C13-324
A-4	1/2 Inch x 150 Ft Roll, Velcro	0.02	C06-1018
A-5	Battery Tray And Hinge Assembly	1	BPTRAY-80447 / 80447
A-6	Grommet, Small Z-340	1	32269
A-7	Battery Pack	1	C13-1290
A-8	Ground Cable	1	404109-2PH / 404109

**A. Battery Tray Assembly - RP Kit**

Description	Contents	RP Kit No.
Battery Pack (W/Attached Cable)	A-4, A-7	RP-LMXBATTPACK
Battery Pack Hardware Kit	Cable Clamp, Screw, (2) A-1, (4) A-2, (4), A-6	RP-LMXBPHDW
Battery Pack Housing Kit	A-4, A-5, A-6	RP-LMXBPHOUSING
Battery Set	(6) A-3	RP-6DBATTSET
Ground Cable Kit	A-8	RP404109-2

## B. USB AND KEYPAD ASSEMBLY

Refer to Page 7 for Replacement Part Numbers, Description and Part Numbers

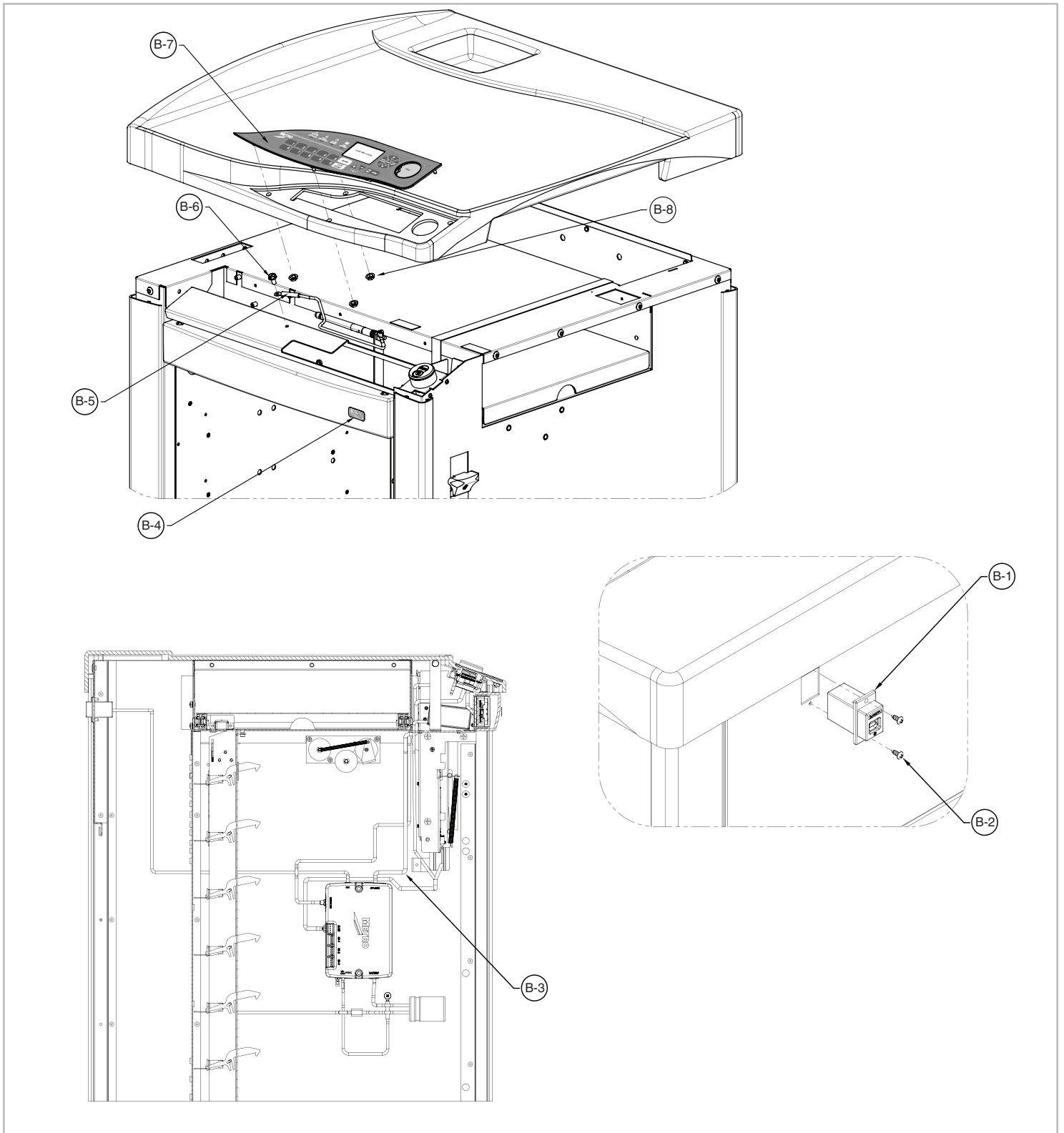


FIGURE 2: LOCATION OF USB AND KEYPAD ASSEMBLY

**B. USB and Keypad Assembly - Part Reference**

Index #	Description	Quantity	Part No. / Drawing No.
B-1	USB port an cable (1m ) - med	1	C13-1321
B-2	#4 x 0.3125 x Phillips Pan Head x Zinc Plated	2	F04-378
B-3	Extension Ribbon Cable 60" Keypad (Basic)	1	C13-1334
B-4	Proximity Label	1	C05-1265
B-5	Ground Wire	1	C13-1306
B-6	#10-32 x 3/8 self-tapping screw hex. and washer head	1	F04-107*
B-7	Basic Keypad – Med	1	C13-1296
	Advanced Keypad - Med	1	C13-1297
	Wireless Keypad - Med	1	C13-1297
B-8	Thread Cutting Nut for 1/8" Dia Shaft (Advanced / Wireless)	3	F02-146
B-9	Cable Clamp Panduit	2	36005-1

**B. USB and Keypad Assembly - RP Kit**

Description	Contents	RP Kit No.
USB Cable & Port	B-1,B-2	RPC13-1321
Basic Keypad	B-7 (Basic)	RPC13-1296
Advanced / Wireless Keypad	B-7, B-8	RPC13-1297
Extension Cable - Basic Keypad	B-4	RPC13-1334

### C. PROXIMITY CARD READER ASSEMBLY

Refer to Page 9 for Replacement Part Numbers, Description and Part Numbers

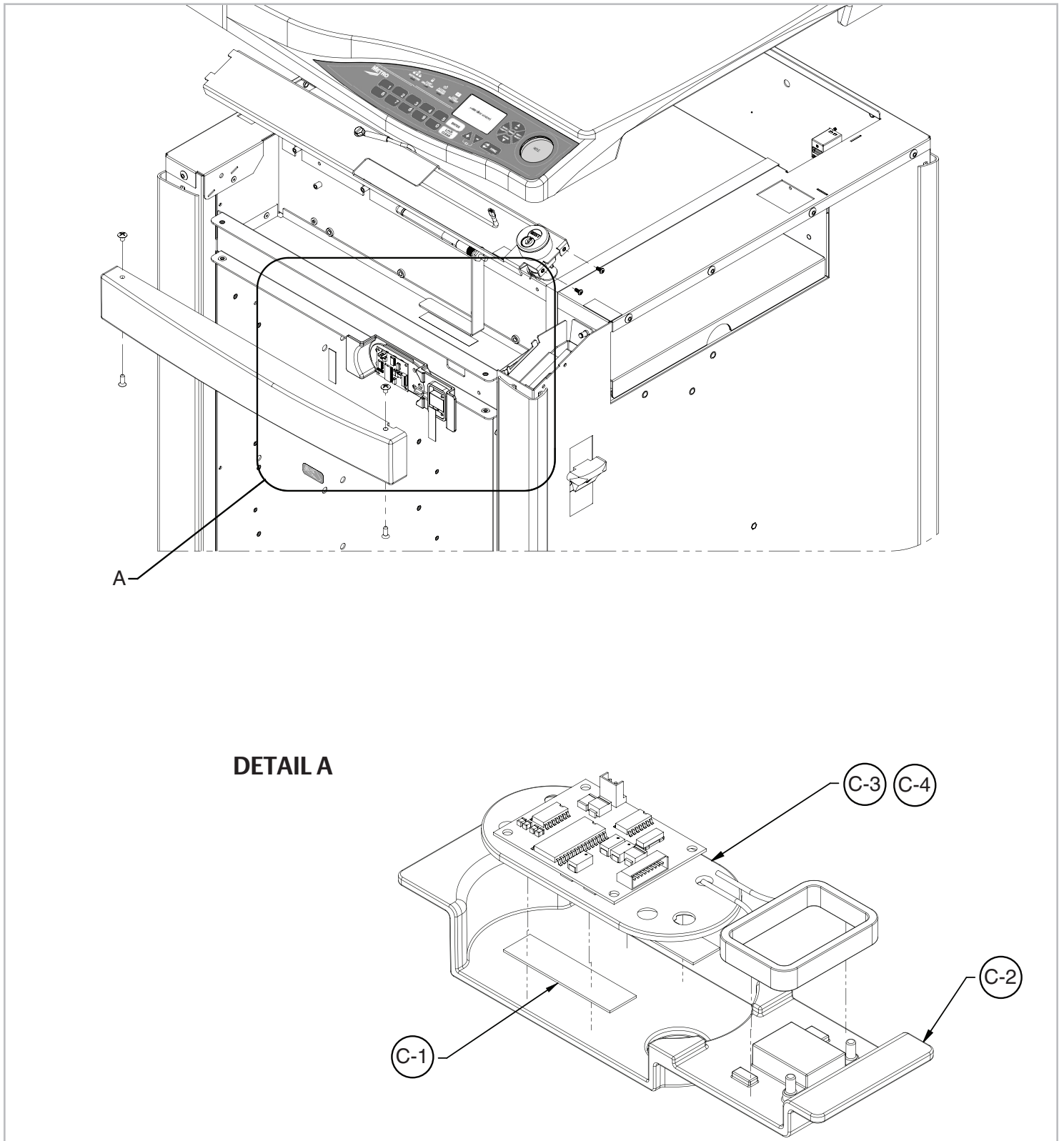


FIGURE 3: LOCATION OF PROXIMITY CARD READER ASSEMBLY



**C. Proximity Card Reader Assembly - Part Reference**

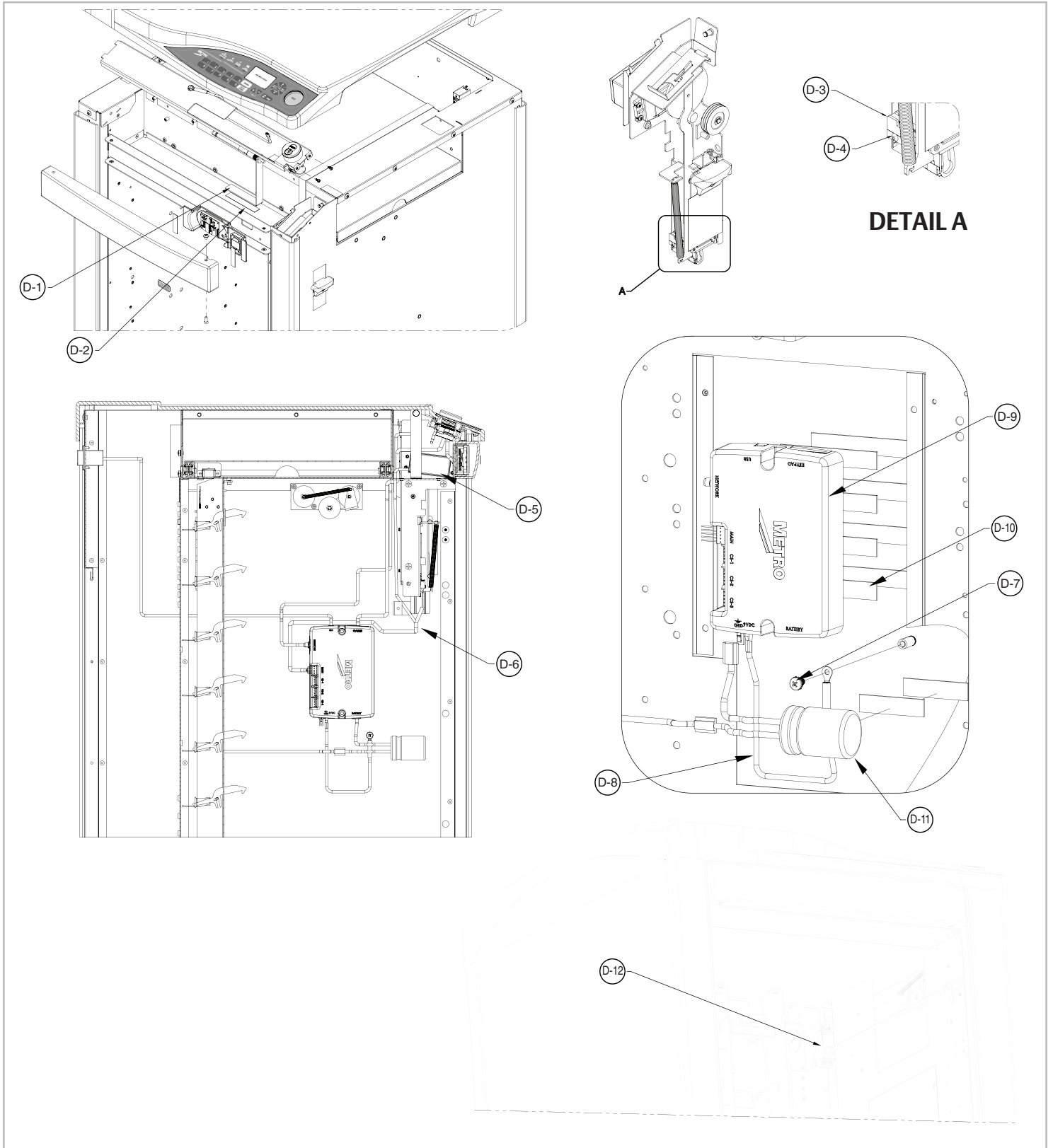
Index #	Description	Quantity	Part No. / Drawing No.
C-1	Tape, Foam D/C 3M	0.5	C06-684
C-2	Prox Reader Bracket	1	C06-1305 / 80452
C-3	Low Frequency Prox – Unassembled & W/Out Top Cover	1	C13-1301 Basic
C-4		1	C13-1336 Adv/WiFi-C4
C-3	High Frequency Prox – Unassembled & W/Out Top Cover	1	C13-1302 Basic
C-4		1	C13-1337 Adv/WiFi - C4
C-5	Nylon Drive Rivet	4	F07-186

**C. Proximity Card Reader Assembly - RP Kit**

Description	Contents	RP Kit No.
Low Frequency Proximity Card Reader (Basic)	C-1, C-2, C-3 (LF), C-5	RP-LMX430PLF
High Frequency Proximity Card Reader (Basic)	C-1, C-2, C-3 (HF), C-5	RP-LMX430PHF
LF - Advanced/Wireless	C-1, C-2, C-4 (LF), C-5	RP-LMX430LCDPLF
HF - Advanced/Wireless	C-1, C-2, C-4 (HF), C-5	RP-LMX430LCDPHF

**D. MAIN MODULE ASSEMBLY**

Refer to Page 11 for Replacement Part Numbers, Description and Part Numbers



**FIGURE 4 : LOCATION OF MAIN MODULE ASSEMBLY**

**D. Main Module Assembly - Part Reference**

Index #	Description	Quantity	Part No. / Drawing No.
D-1	Bracket, antenna mount, med carts	1	C09-1136
D-2	VHB TAPE 3MF9473PC 1/2" X 60YR	0.06	401002-1
D-3	Switch, sub miniature	1	34005
D-4	Screw, 2-56 x 7/16, pan head phillips, machine screw	2	F04-582
D-5	Med cart motor terminated with c-grid male connector	1	C13-1328
D-6	Main servo cable molex, 62"	1	C13-1303
D-7	10-32 x 3/8 phillips pan sems screw rohs zinc	1	F04-386
D-8	Ground Wire	1	C13-1306
D-9	Med Basic Keyless Entry Touchpad	1	C13-1283
	Med Advanced Keyless Entry Touchpad	1	C13-1286
	Med Advanced Wireless Keyless Entry Touchpad	1	C13-1289
D-10	1/2 inch x 150 ft roll, velcro, heavy duty all hook, uline part	0.35	C06-1018
D-11	Capacitor	1	C13-1376
D-12	CS Servo	1	C13-1330

**D. Main Module Assembly - RP Kit**

Description	Contents	RP Kit No.
Main Module - Basic	D-9 (Basic), D-10	RPC13-1283
Main Module - Advanced	D-9 (Advance), D-10	RPC13-1286
Main Module - Wireless (with Antenna & Cable)	D-9 (WiFi), D-10, D-7, D-8, D-1, D-2	RPC13-1286
Antenna Mount	D-1, D-2	RP-LMXANTMNT
Cable - Module to Latch	D-6	RPC13-1303
Main Servo Switch	D-3 (4)	RP34005
Main Servo	D-5	RPC13-1328
Capacitor	D-11	RPC13-1376
CS Servo	D-12	RPC13-1330

**E. LockView 5 and LockView 5Pro Software - Part Reference**

Index #	Description	Quantity	Part No. / Drawing No.
- E-1	LockView 5 Software (5PRO)	1	C22-020
	LockView 5 Software	1	C22-021
- E-2	Cable USB A-B Male, 6 FT, CABUSB6AB	1	400026-6

\* - means Not Illustrated.

**E. LockView 5 and LockView 5Pro Software - RP Kit**

Description	Contents	RP Kit No.
Cable USB A-B Male, 6 FT, CABUSB6AB	E-2	RP400026-6





We put space to work.

an Ali Group Company



The Spirit of Excellence